

(45) **Date of Patent:** **Nov. 20, 2018**

(56) **References Cited**

U.S. PATENT DOCUMENTS

5,481,597	A	1/1996	Given	
5,951,638	A *	9/1999	Hoss	H04L 51/36 709/206

6,101,320	A	8/2000	Schuetze
6,950,502	B1	9/2005	Jenkins
7,450,937	B1	11/2008	Claudatos
7,673,327	B1	3/2010	Polis
7,886,000	B1	2/2011	Polis
7,908,647	B1	3/2011	Polis
8,090,787	B2	1/2012	Polis
8,095,592	B2	1/2012	Polis
8,108,460	B2	1/2012	Polis
8,112,476	B2	2/2012	Polis
8,122,080	B2	2/2012	Polis
8,156,183	B2	4/2012	Polis

(Continued)

(*) Notice: Subject to any disclaimer, the term of this patent is extended or adjusted under 35 U.S.C. 154(b) by 283 days.

FOREIGN PATENT DOCUMENTS

WO	9931575	6/1999
WO	2013112570 A1	8/2013

(22) Filed: **Dec. 31, 2015**

OTHER PUBLICATIONS

(65) **Prior Publication Data**

US 2017/0195267 A1 Jul. 6, 2017

Guangyi Xiao et al., "User Interoperability With Heterogeneous IoT Devices Through Transformation," pp. 1486-1496, 2014.

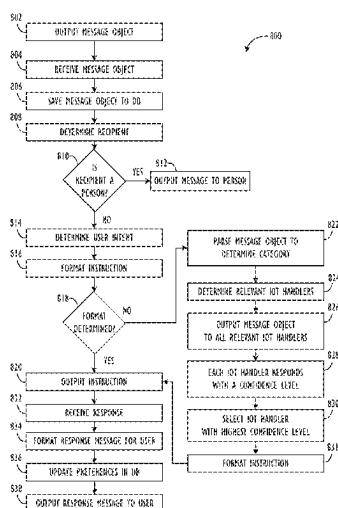
Primary Examiner — Michael C Lai

(74) *Attorney, Agent, or Firm* — Blank Rome LLP

(57) **ABSTRACT**

A universal interaction platform that communicates with service providers and smart devices by receiving a message object that includes information indicative of a user intent for one of the service providers or smart devices to perform a function, determines the service provider or smart device that the user intends to perform the function, determines a protocol and format for communicating with the service provider or smart device, formats an instruction for the service provider or smart device, and outputs the instruction to the service provider or smart device.

21 Claims, 21 Drawing Sheets

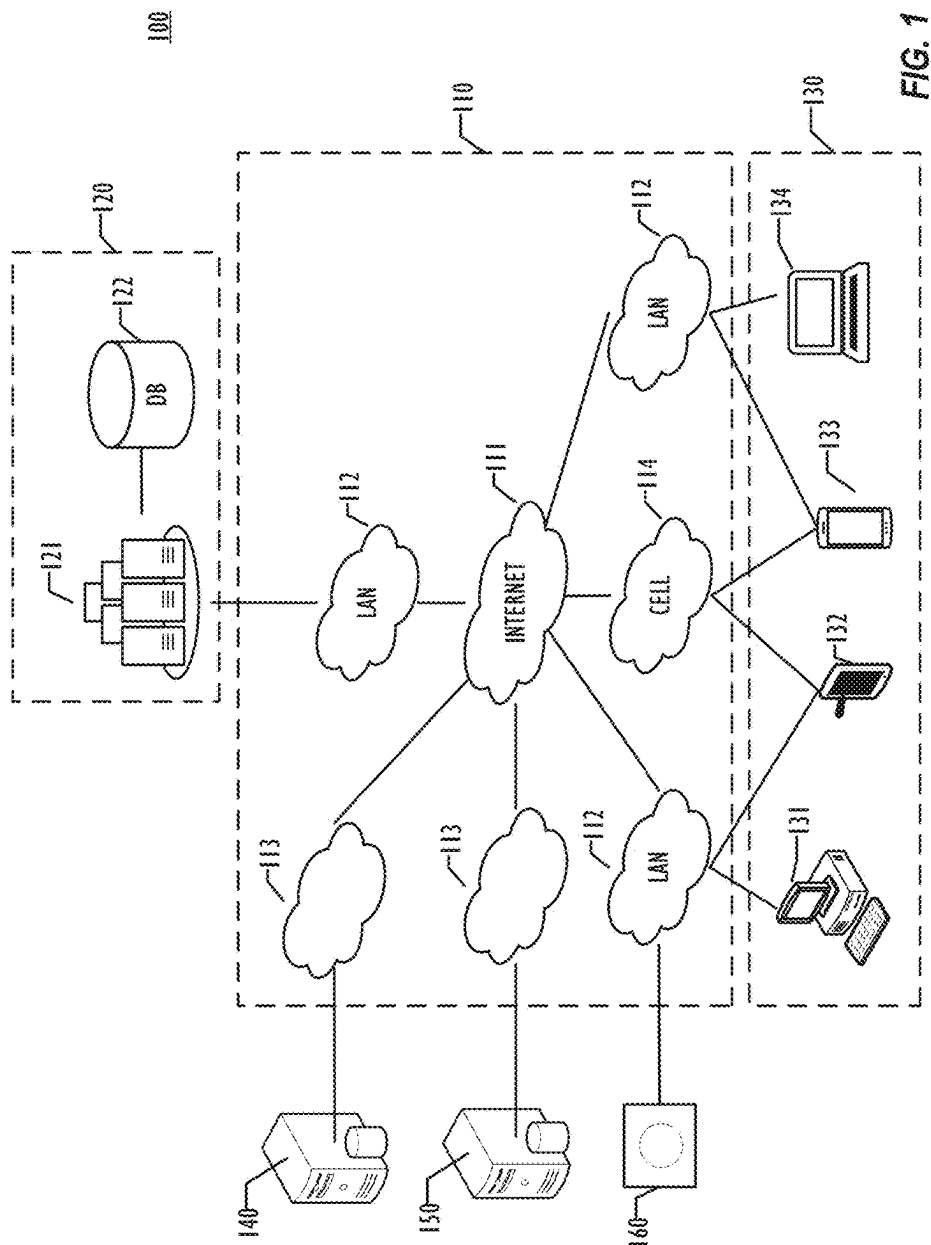


US 10,135,764 B2

Page 2

(56)	References Cited			2010/0323728 A1	12/2010	Gould	
	U.S. PATENT DOCUMENTS			2010/0325227 A1 *	12/2010	Novy	H04L 51/066 709/206
	8,281,125 B1	10/2012	Briceno	2011/0010182 A1	1/2011	Turski	
	8,296,360 B2	10/2012	Polis	2011/0051913 A1	3/2011	Kesler	
	8,433,705 B1	4/2013	Dredze	2011/0078247 A1	3/2011	Jackson	
	8,438,223 B2	5/2013	Polis	2011/0078256 A1	3/2011	Wang	
	8,458,256 B2	6/2013	Polis	2011/0130168 A1	6/2011	Vendrow	
	8,458,292 B2	6/2013	Polis	2011/0194629 A1	8/2011	Bekanich	
	8,458,347 B2	6/2013	Polis	2011/0219008 A1	9/2011	Been	
	8,468,202 B2	6/2013	Polis	2011/0265010 A1	10/2011	Ferguson	
	8,959,156 B2	2/2015	Polis	2011/0276640 A1	11/2011	Jesse	
2002/0133509 A1	9/2002	Johnston		2011/0295851 A1	12/2011	El-Saban	
2002/0152091 A1 *	10/2002	Nagaoka	G06Q 30/02 705/1.1	2012/0016858 A1	1/2012	Rathod	
				2012/0209847 A1	8/2012	Rangan	
2002/0178000 A1	11/2002	Aktas		2012/0210253 A1	8/2012	Luna	
2002/0194322 A1	12/2002	Nagata		2012/0221962 A1	8/2012	Lew	
2004/0117507 A1	6/2004	Torma		2013/0018945 A1	1/2013	Vendrow	
2004/0137884 A1	7/2004	Engstrom		2013/0024521 A1	1/2013	Pocklington	
2004/0243719 A1	12/2004	Roselinsky		2013/0067345 A1	3/2013	Das	
2004/0266411 A1 *	12/2004	Galicia	H04M 3/5307 455/414.4	2013/0097279 A1	4/2013	Polis	
				2013/0111487 A1	5/2013	Cheyre	
2005/0015443 A1	1/2005	Levine		2013/0127864 A1	5/2013	Nevin, III	
2005/0080857 A1	4/2005	Kirsch		2013/0151508 A1	6/2013	Kurabayashi	
2005/0198159 A1	9/2005	Kirsch		2013/0262385 A1	10/2013	Kumarasamy	
2006/0193450 A1	8/2006	Flynt		2013/0262852 A1	10/2013	Roeder	
2007/0054676 A1 *	3/2007	Duan	H04W 64/00 455/456.2	2013/0267264 A1	10/2013	Abuelsaad	
				2013/0268516 A1	10/2013	Chaudhri	
				2013/0304830 A1 *	11/2013	Olsen	H04L 51/32 709/206
2007/0116195 A1	5/2007	Thompson		2013/0325343 A1	12/2013	Blumenberg	
2007/0130273 A1	6/2007	Huynh		2013/0332308 A1 *	12/2013	Linden	G06Q 30/0631 705/26.7
2007/0237135 A1	10/2007	Trevallyn-Jones					
2007/0299796 A1	12/2007	MacBeth		2014/0020047 A1	1/2014	Liebmann	
2008/0062133 A1	3/2008	Wolf		2014/0032538 A1	1/2014	Arngren	
2008/0088428 A1	4/2008	Pitre		2014/0149399 A1	5/2014	Kurzion	
2008/0112546 A1	5/2008	Fletcher		2014/0270131 A1	9/2014	Hand	
2008/0236103 A1	10/2008	Lowder		2014/0280460 A1	9/2014	Nemer	
2008/0261569 A1	10/2008	Britt		2014/0297807 A1	10/2014	Dasgupta	
2009/0016504 A1 *	1/2009	Mantell	H04L 51/066 379/101.01	2015/0039887 A1	2/2015	Kahol	
				2015/0095127 A1	4/2015	Patel	
2009/0119370 A1	5/2009	Stern		2015/0186455 A1	7/2015	Horling	
2009/0177484 A1	7/2009	Davis		2015/0278370 A1 *	10/2015	Stratvert	G06F 17/30867 707/766
2009/0177744 A1	7/2009	Marlow					
2009/0181702 A1 *	7/2009	Vargas	H04L 51/14 455/466	2015/0281184 A1	10/2015	Cooley	
				2015/0286747 A1	10/2015	Anastasakos	
2009/0271486 A1	10/2009	Ligh		2015/0286943 A1 *	10/2015	Wang	G06F 3/04842 706/11
2009/0292814 A1	11/2009	Ting					
2009/0299996 A1	12/2009	Yu		2015/0339405 A1	11/2015	Vora	
2010/0057872 A1	3/2010	Koons		2016/0078030 A1	3/2016	Brackett	
2010/0210291 A1	8/2010	Lauer		2016/0087944 A1	3/2016	Downey	
2010/0220585 A1	9/2010	Poulson		2016/0092959 A1	3/2016	Gross	
2010/0223341 A1	9/2010	Manolescu		2017/0206276 A1	7/2017	Gill	
2010/0229107 A1 *	9/2010	Turner	A63F 13/12 715/757				
2010/0250578 A1	9/2010	Athsani					
2010/0312644 A1	12/2010	Borgs					

* cited by examiner



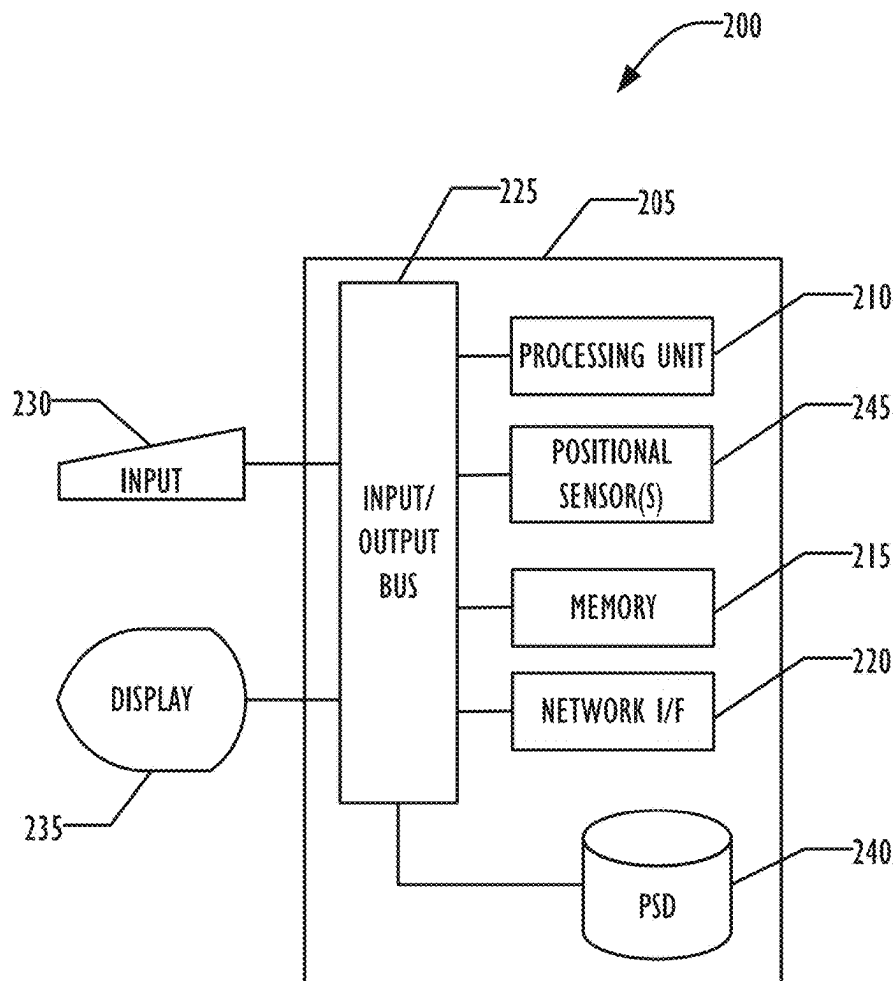


FIG. 2A

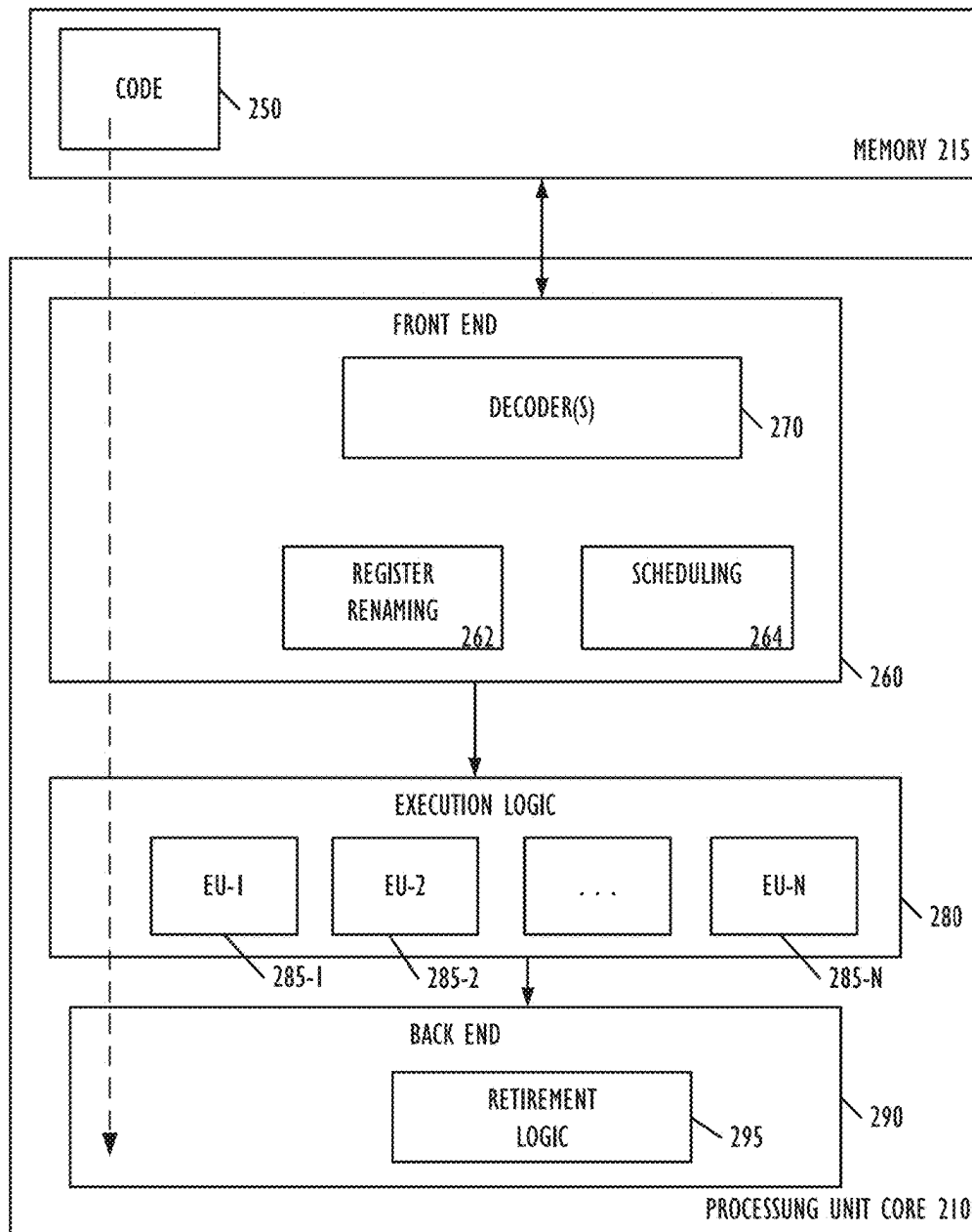


FIG. 2B

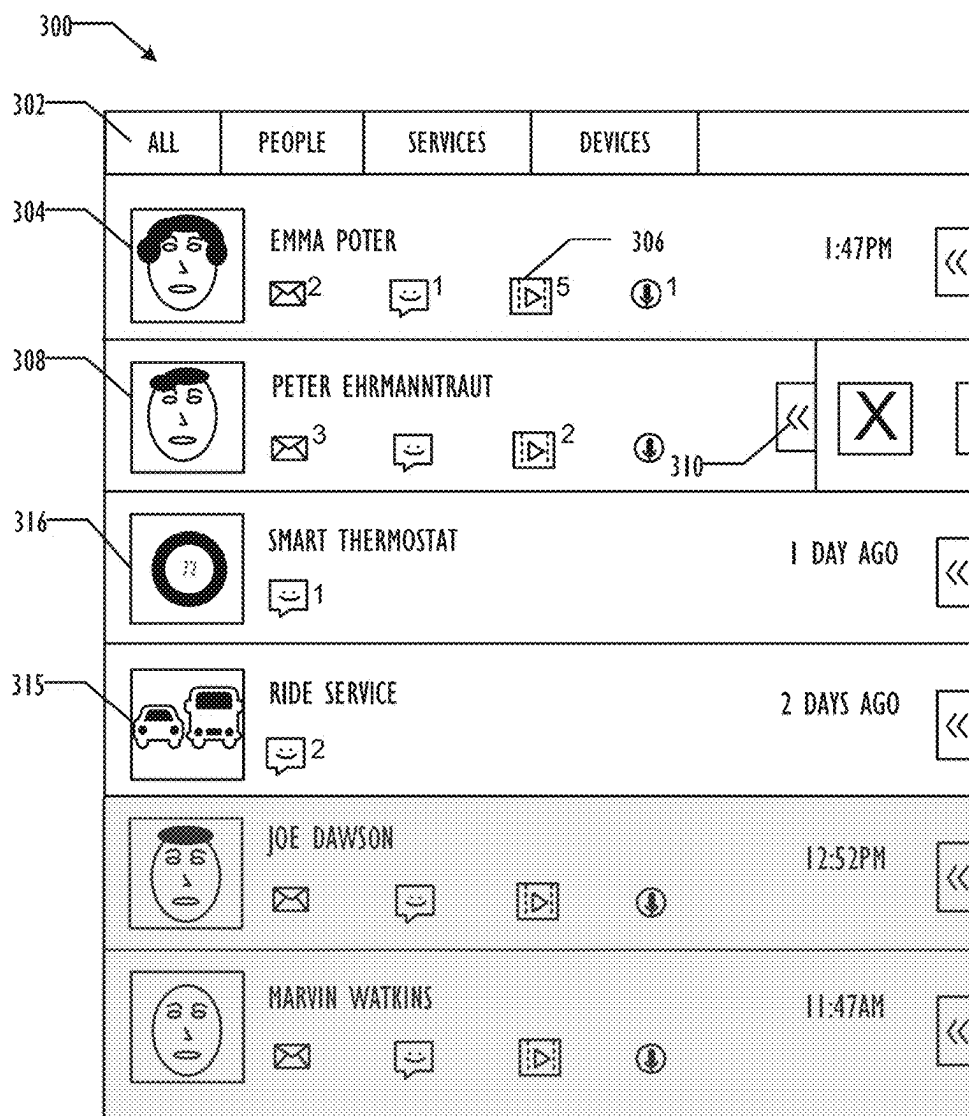


FIG. 3A

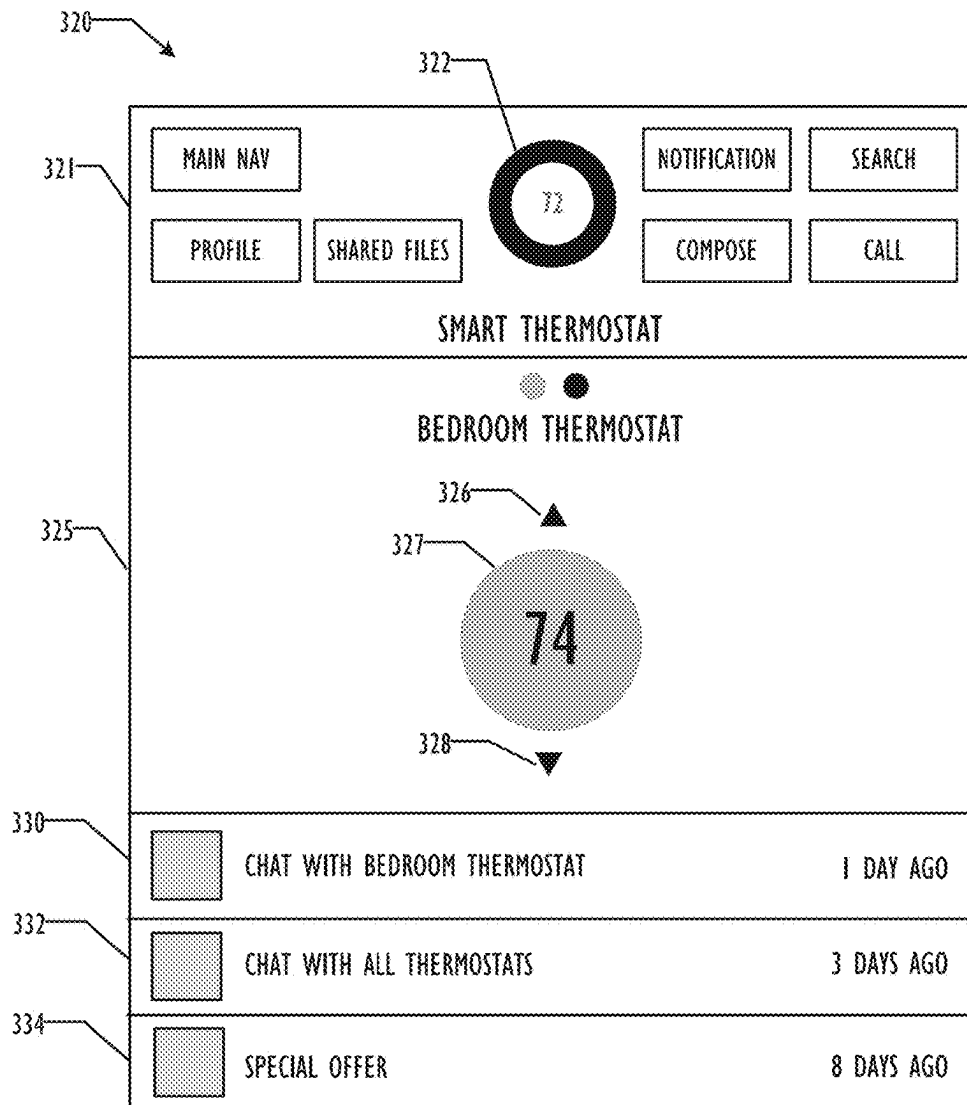


FIG. 3B

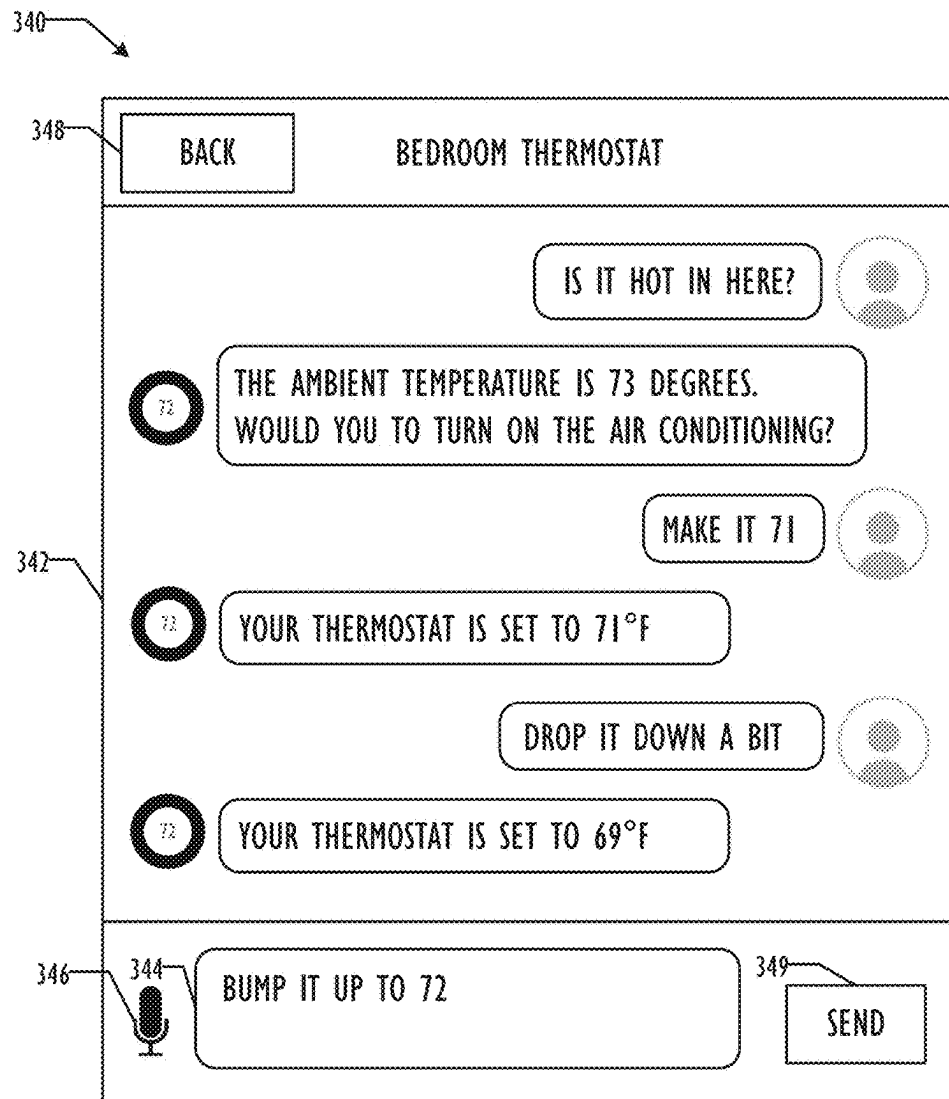


FIG. 3C

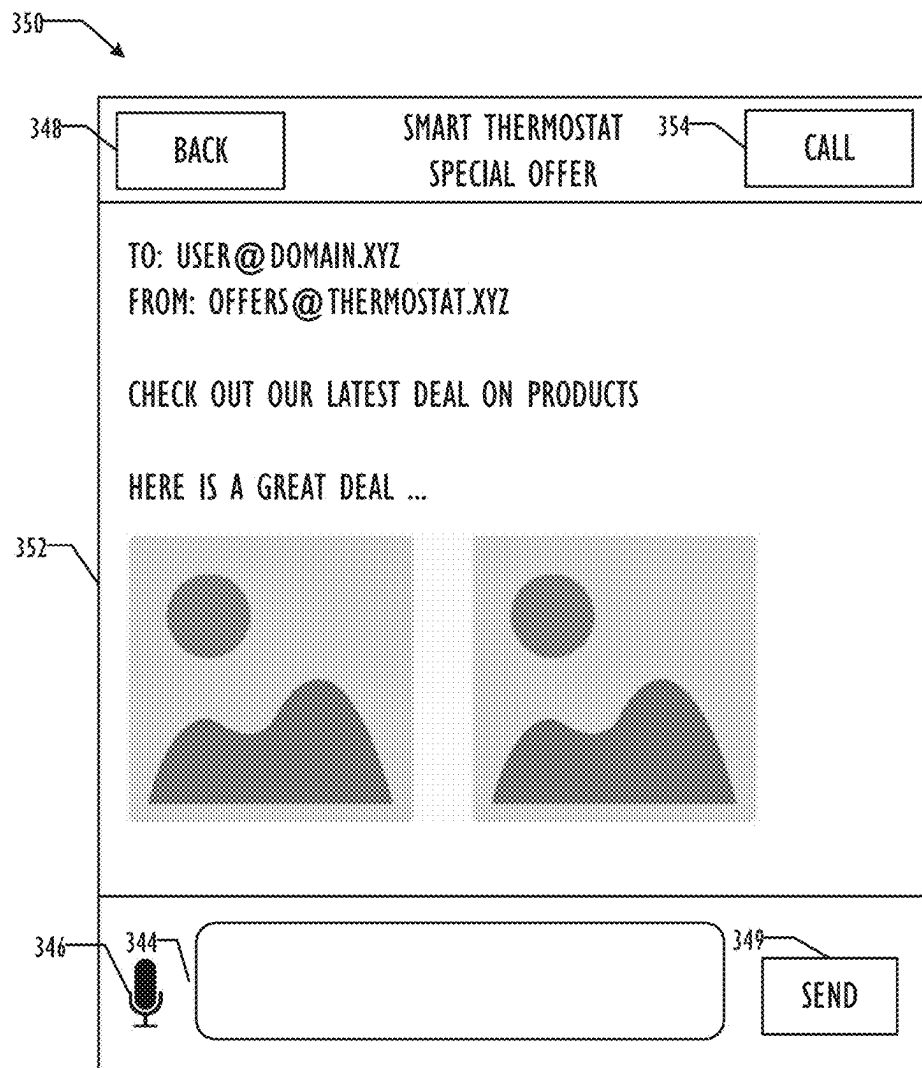


FIG. 3D

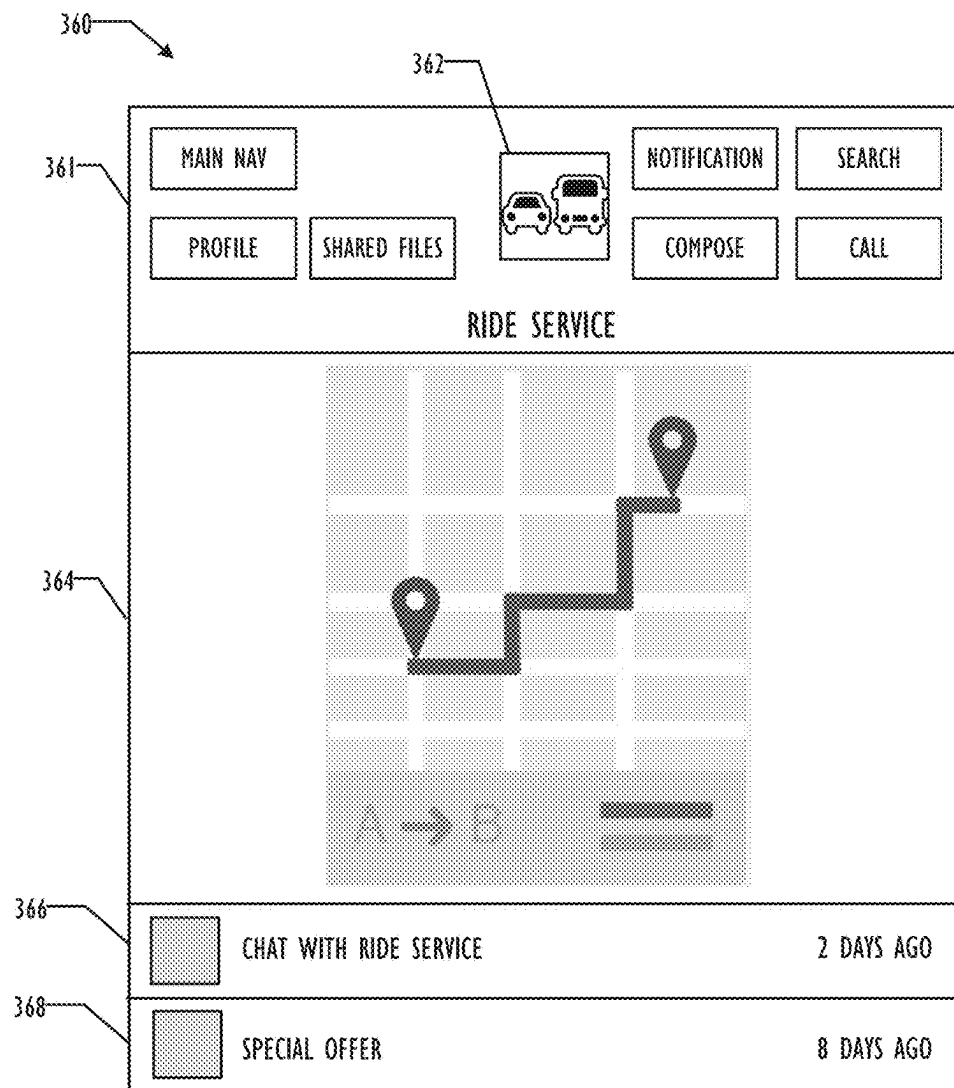


FIG. 3E

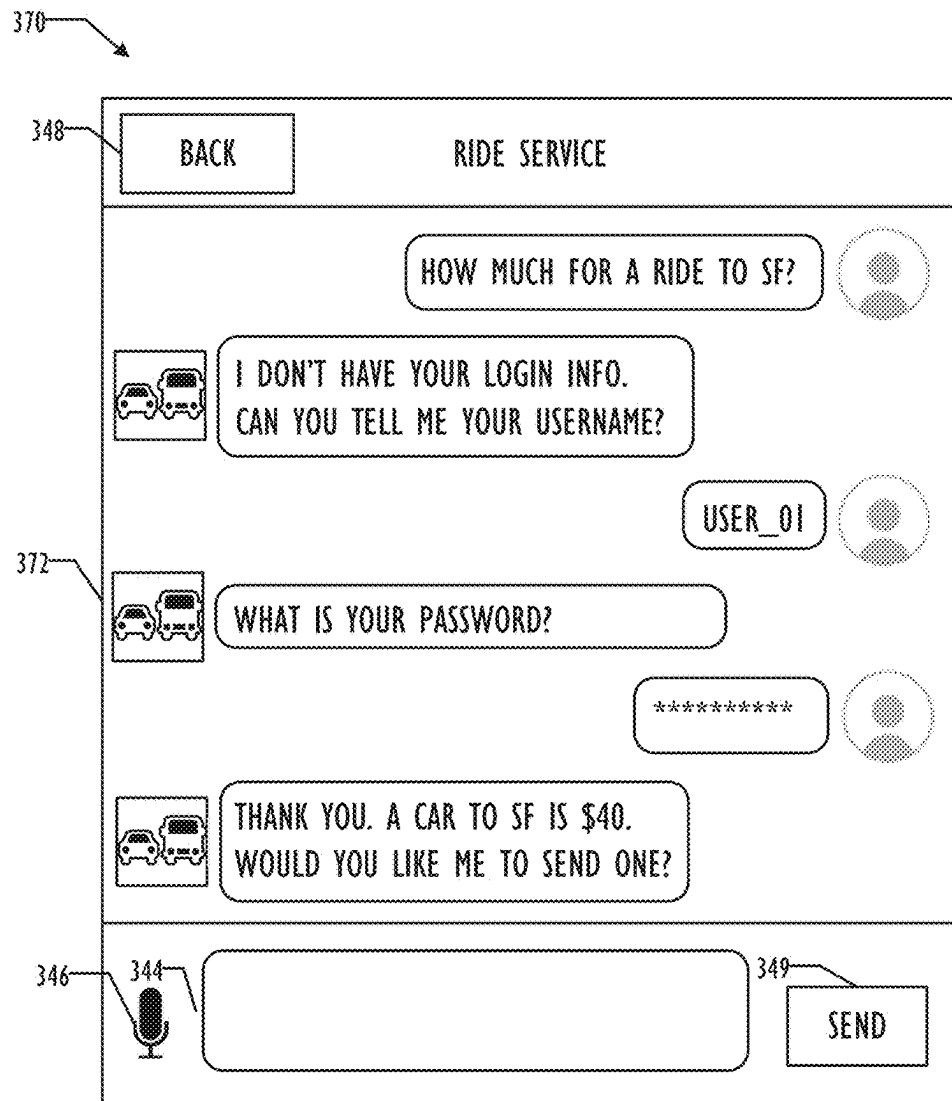


FIG. 3F

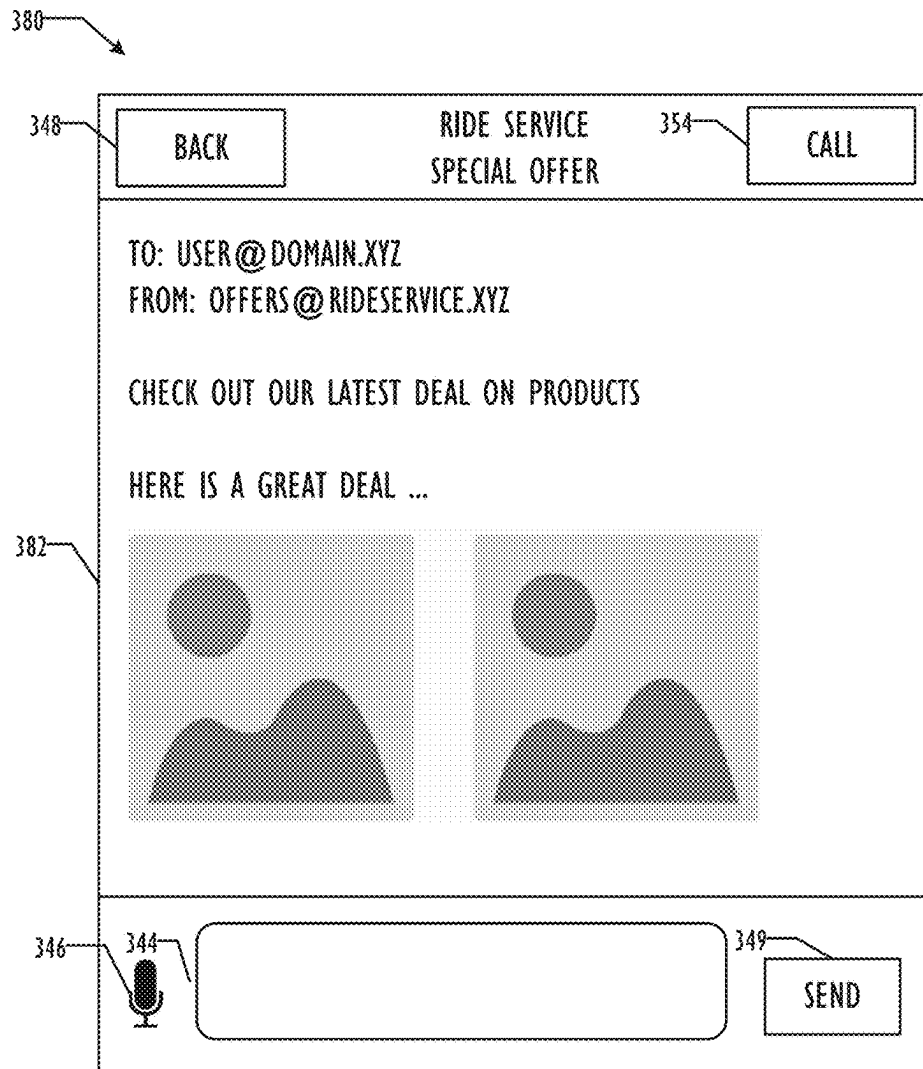


FIG. 3G

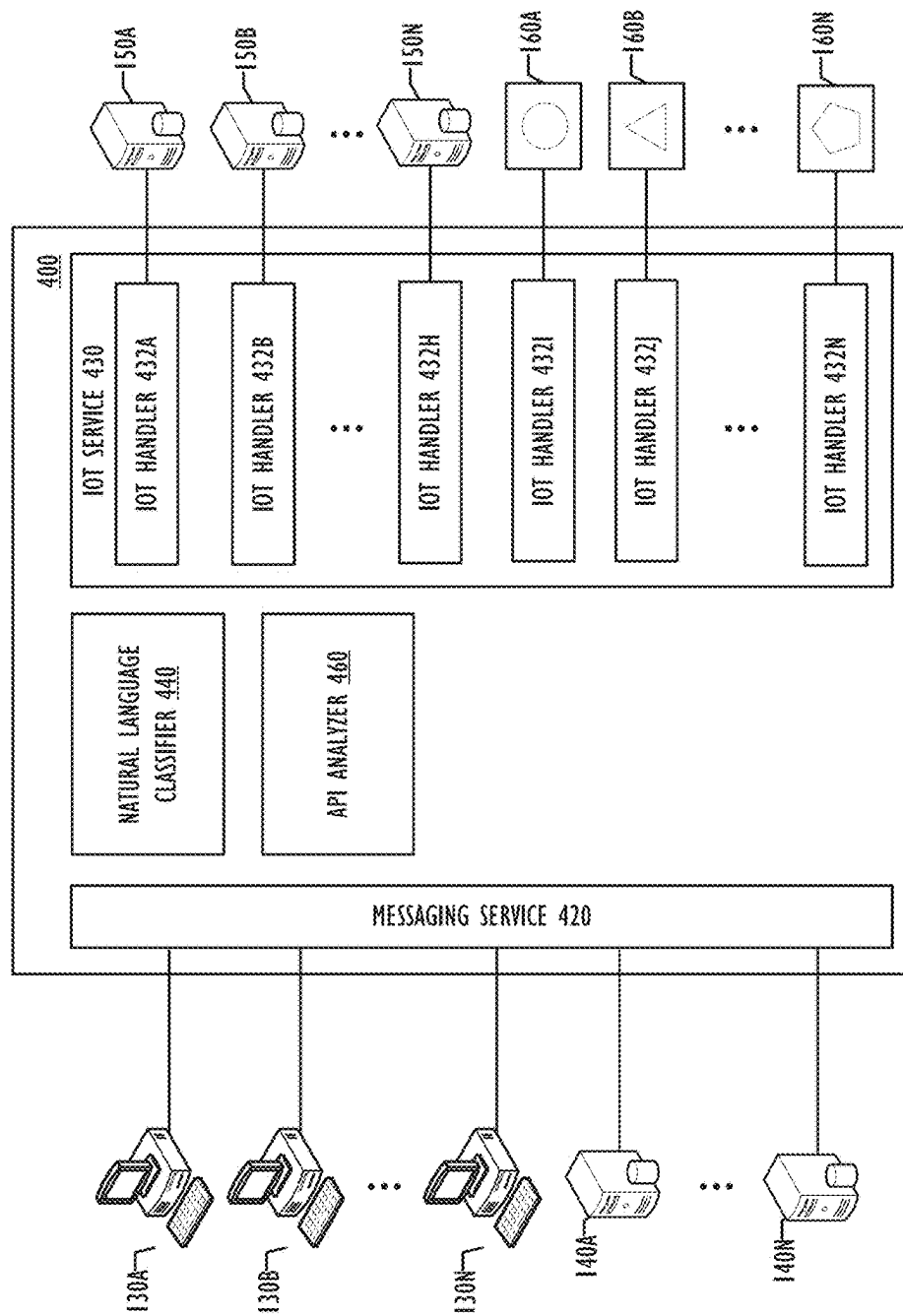


FIG. 4

Zone	Stations	Northbound Trains															
		309	211	313	215	217	319	221	323	225	227	329	231	233	135		
6	Gilroy					6:07		6:28			7:05						
6	San Martin					6:16		6:37			7:14						
6	Morgan Hill					6:22		6:43			7:20						
5	Blossom Hill					6:35		6:56			7:33						
5	Capitol					6:41		7:02			7:39						
4	Tamien	5:56	—	—	—	6:49	6:56	7:10	—	—	7:47	7:56	—	8:33	—		
4	San Jose Diridon	6:03	6:20	6:45	6:50	6:57	7:03	7:18	7:45	7:50	7:55	8:03	8:20	8:40	9:15		
4	College Park	—	—	—	—	—	—	—	—	—	—	7:58	—	—	—		
4	Santa Clara	—	6:25	—	—	7:02	—	7:23	—	—	8:02	—	8:25	8:45	9:20		
4	Lawrence	—	—	—	—	7:12	—	7:28	—	—	8:12	—	—	8:50	9:25		
3	Sunnyvale	6:13	6:32	—	7:00	7:18	7:13	7:32	—	8:00	8:18	8:14	8:32	8:54	9:29		
3	Mountain View	—	6:37	6:57	7:05	7:23	—	7:37	7:57	8:05	8:23	—	8:37	9:00	9:34		
3	San Antonio	—	—	—	—	7:27	—	—	—	—	8:27	—	—	9:04	9:38		
3	California Ave	—	—	—	7:11	7:31	—	—	—	8:11	8:31	—	—	9:08	9:42		
3	Palo Alto	6:23	—	7:05	7:16	7:36	7:23	—	8:05	8:16	8:36	8:25	—	9:14	9:46		
3	Menlo Park	—	6:45	—	—	7:39	—	7:45	—	—	8:39	—	8:45	9:17	9:49		
2	Redwood City	6:30	6:51	—	—	7:45	7:30	7:51	—	—	8:45	8:33	8:51	9:23	9:54		
2	San Carlos	—	6:55	—	7:24	—	—	7:55	—	8:24	—	—	8:55	9:27	9:58		
2	Belmont	—	6:58	—	—	—	—	7:58	—	—	—	—	8:58	9:30	10:01		
2	Hillsdale	—	7:02	7:16	7:28	7:51	—	8:02	8:16	8:28	8:51	—	9:02	9:33	10:04		

FIG. 5A

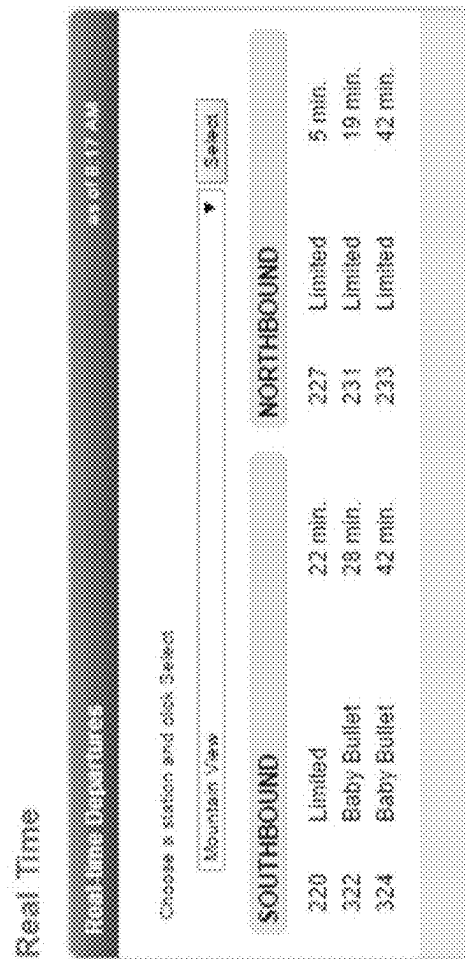


FIG. 5B

Function	Method	Endpoint	Parameters
List products	GET	/v1/products	latitude
			longitude
Get price estimates	GET	/v1/estimates/price	start_latitude
			start_longitude
			end_latitude
			end_longitude
Get time estimates	GET	/v1/estimates/time	start_latitude
			start_longitude
			customer_uid (optional)
			product_id (optional)
Create ride request	POST	/v1/requests	product_id
			start_latitude
			start_longitude
			end_latitude (optional)
			end_longitude (optional)
			surge_confirmation_id (optional)

FIG. 6A

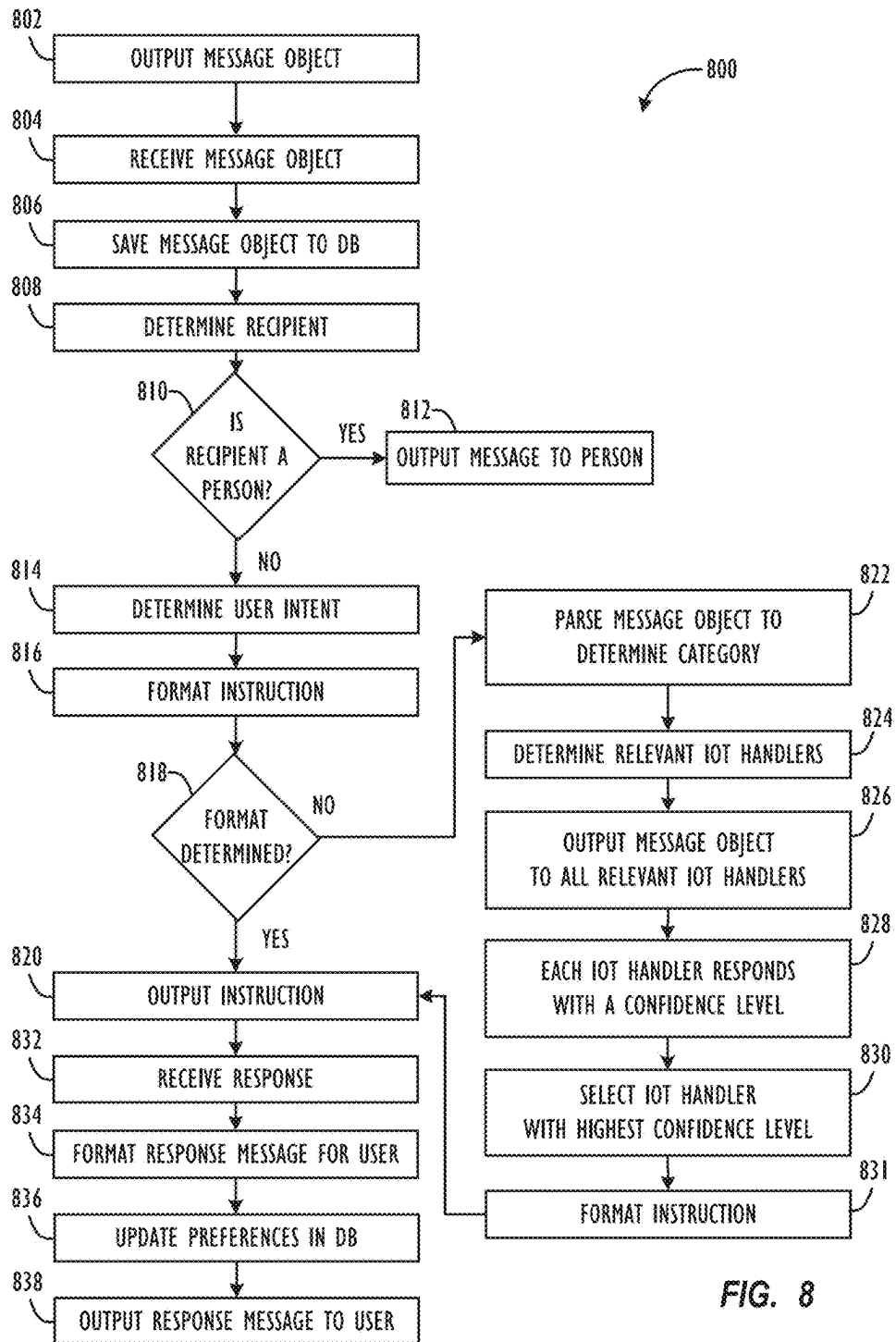
STATUS-CODE: 200 OK

```
{
  "PRODUCTS": [
    {
      "CAPACITY": 4,
      "DESCRIPTION": "THE LOW-COST UBER",
      "PRICE_DETAILS": {
        "DISTANCE_UNIT": "MILE",
        "COST_PER_MINUTE": 0.26,
        "SERVICE_FEES": [
          {
            "FEE": 1.0,
            "NAME": "SAFE RIDES FEE"
          }
        ],
        "MINIMUM": 5.0,
        "COST_PER_DISTANCE": 1.3,
        "BASE": 2.2,
        "CANCELLATION_FEE": 5.0,
        "CURRENCY_CODE": "USD"
      },
      "IMAGE": "HTTP://D1A3F4SPAZZRP4.CLOUDFRONT.NET/CAR.JPG",
      "DISPLAY_NAME": "CARX",
      "PRODUCT_ID": "A1111C8C-C720-46C3-8534-2FCDD730040D"
    },
    {
      "CAPACITY": 6,
      "DESCRIPTION": "LOW-COST RIDES FOR LARGE GROUPS",
      "PRICE_DETAILS": {
        "DISTANCE_UNIT": "MILE",
        "COST_PER_MINUTE": 0.45,
        "SERVICE_FEES": [
          {
            "FEE": 1.0,
            "NAME": "SAFE RIDES FEE"
          }
        ],
        "MINIMUM": 8.0,
        "COST_PER_DISTANCE": 2.15,
        "BASE": 5.0,
        "CANCELLATION_FEE": 5.0,
        "CURRENCY_CODE": "USD"
      },
      "IMAGE": "HTTP://D1A3F4SPAZZRP4.CLOUDFRONT.NET/CAR.JPG",
      "DISPLAY_NAME": "CARXL",
      "PRODUCT_ID": "821415D8-3BD5-4E27-9604-194E4359A449"
    }
  ]
}
```

FIG. 6B

Metadata		Example
access_token		c.FmDPkzyzaQe...
client_version		17
Data Values	Permission	Example
device_id	read	peyiJNo0IldT2YIIvtYaGQ
locale	read	en-US
software_version	read	4.0
structure_id	read	VqFabWH21nwVyd4...
name	read	Hallway (upstairs)
name_long	read	Hallway Thermostat (upstairs)
last_connection	read	2015-12-31T23:59:59.000Z
is_online	read	TRUE
can_cool	read	TRUE
can_heat	read	TRUE
is_using_emergency_heat	read	TRUE
has_fan	read	TRUE
fan_timer_active	read	TRUE
fan_timer_timeout	read	2015-12-31T23:59:59.000Z
has_leaf	read	FALSE
temperature_scale	read	F
target_temperature_f	read/write	72
target_temperature_c	read/write	21.5
target_temperature_high_f	read/write	80
target_temperature_high_c	read/write	24.5
target_temperature_low_f	read/write	65
target_temperature_low_c	read/write	19.5
away_temperature_high_f	read	80
away_temperature_high_c	read	24.5
away_temperature_low_f	read	65
away_temperature_low_c	read	19.5
hvac_mode	read/write	heat-cool
ambient_temperature_f	read	72
ambient_temperature_c	read	21.5
humidity	read	35
hvac_state	read	heating
where_id	read	d6reb_OZTM...

FIG. 7



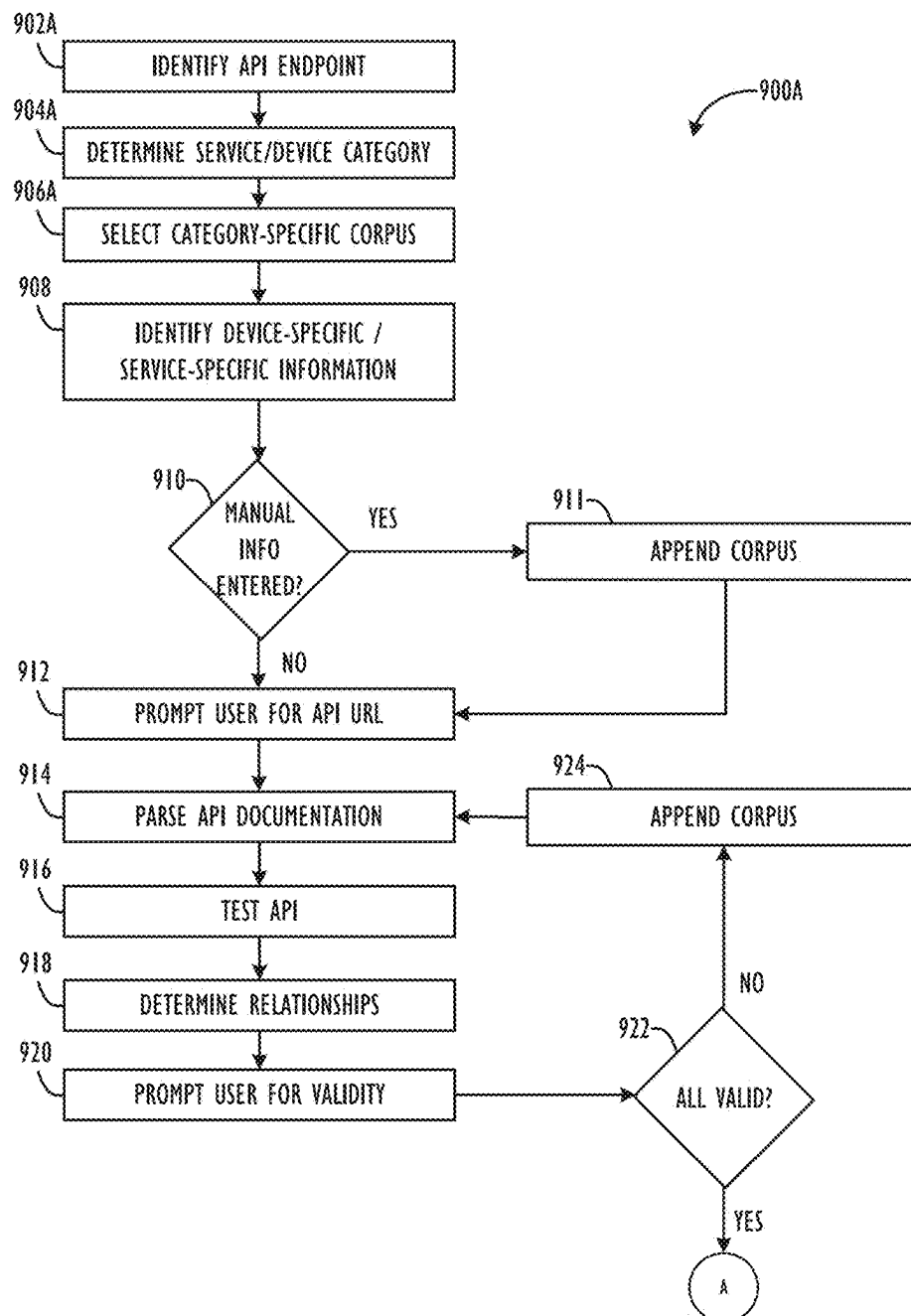


FIG. 9A

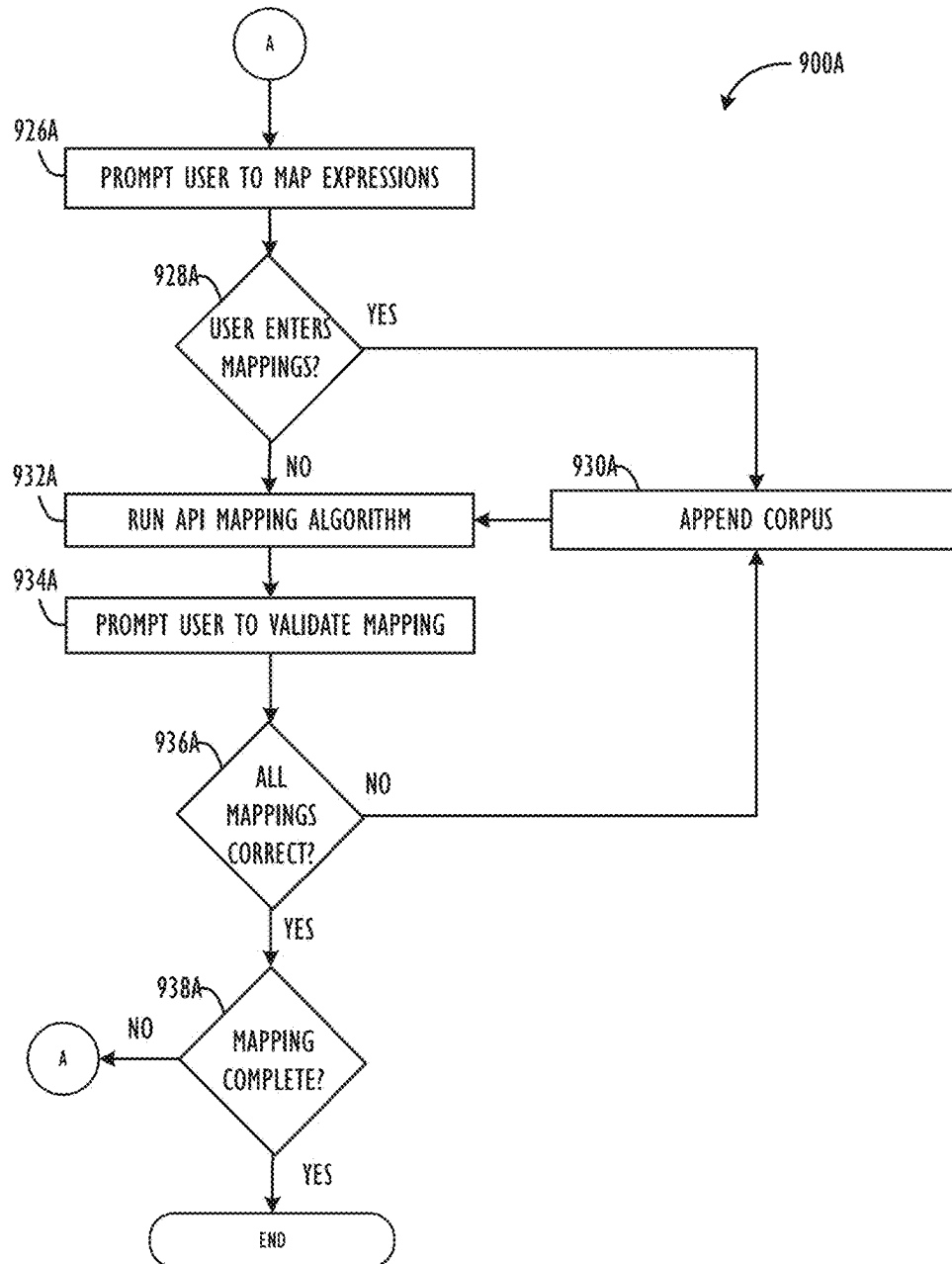


FIG. 9B

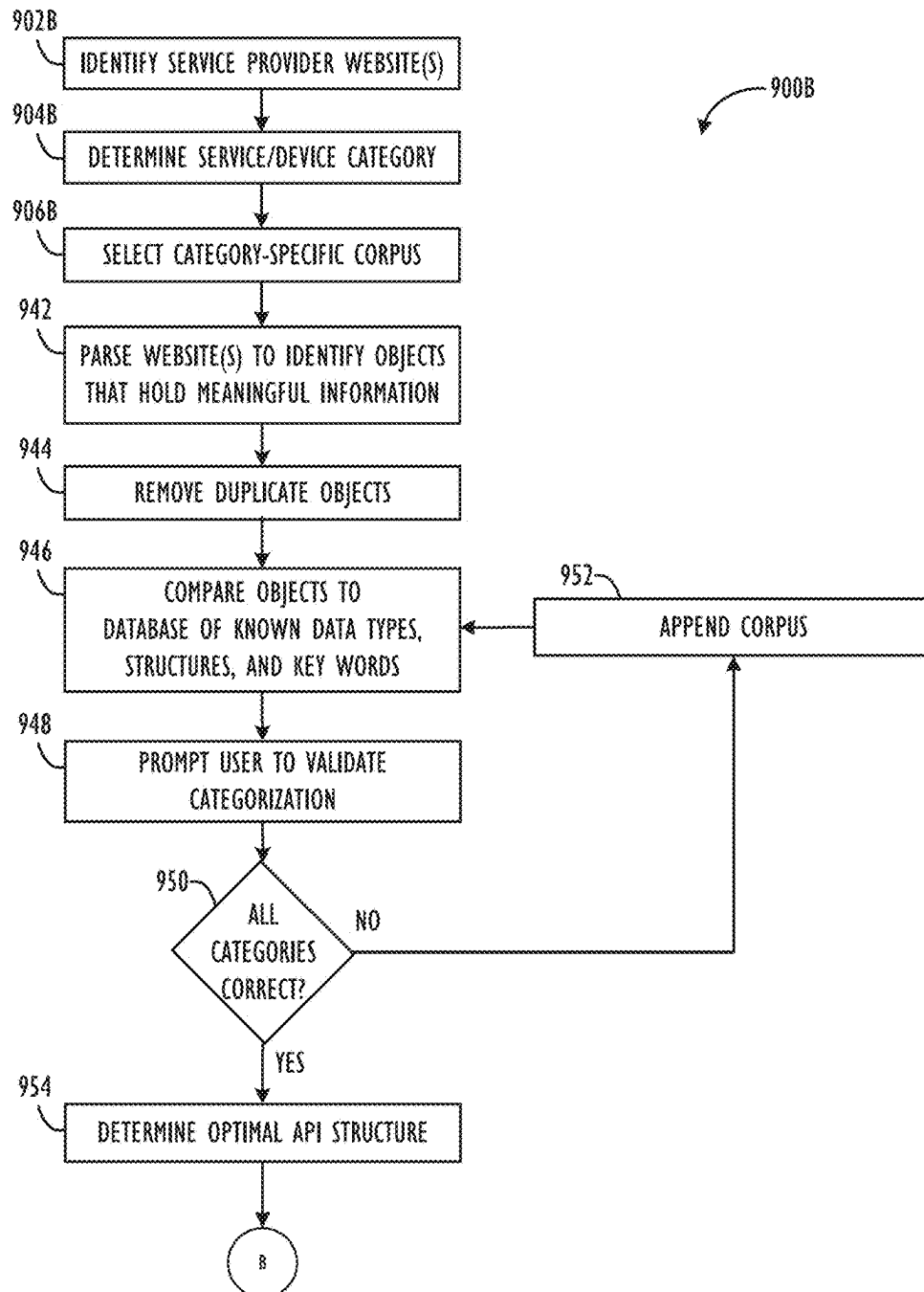


FIG. 9C

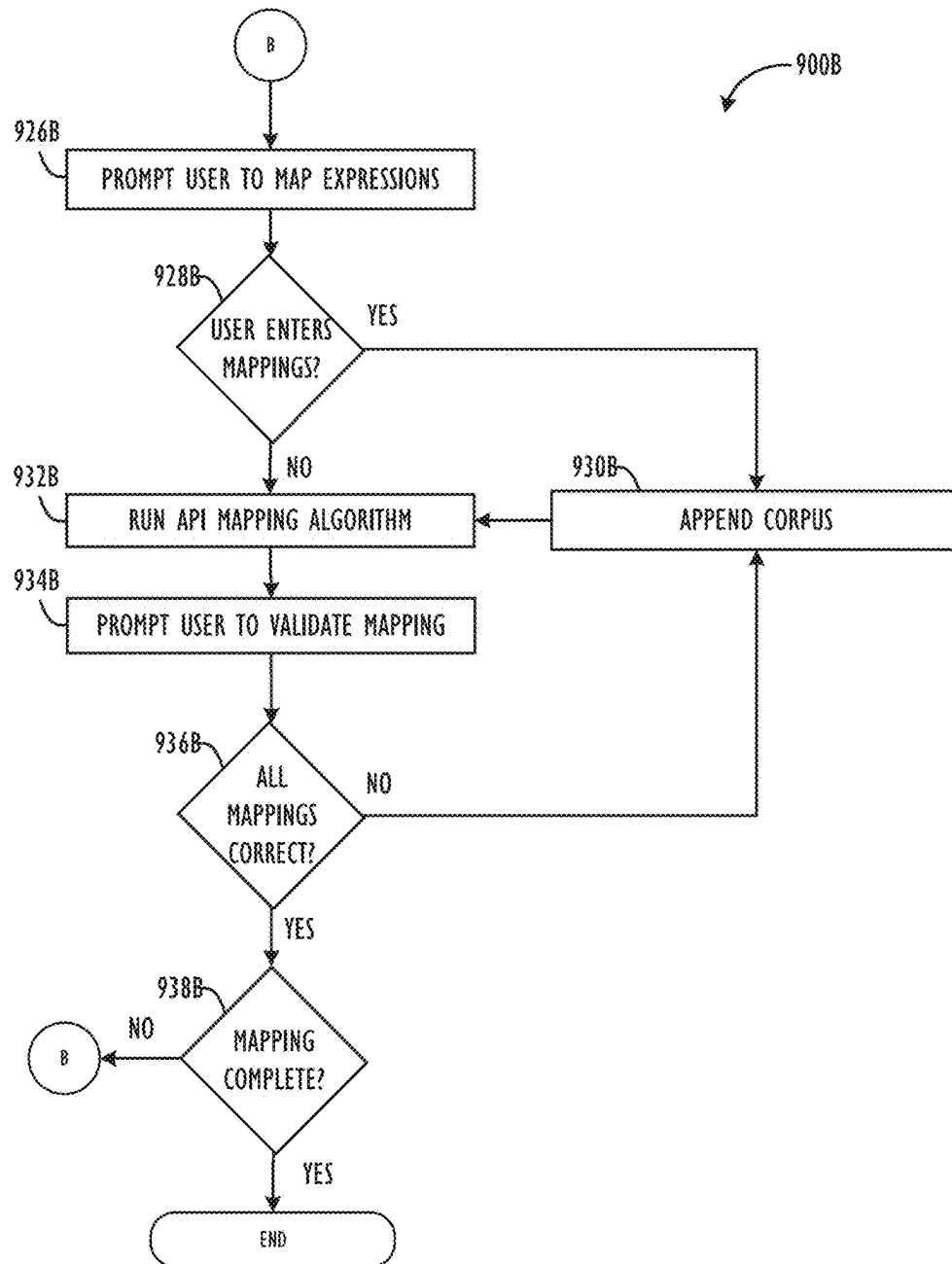


FIG. 9D

1

UNIVERSAL INTERACTION PLATFORM FOR PEOPLE, SERVICES, AND DEVICES

TECHNICAL FIELD

This disclosure relates generally to apparatuses, methods, and computer readable media for interacting with people, services, and devices across multiple communications formats and protocols.

BACKGROUND

A growing number of service providers allow users to request information or services from those service providers via a third party software applications. Additionally, a growing number of smart devices allow users to obtain information from and control those smart devices via a third party software application. Meanwhile, individuals communicate with each other using a variety of protocols such as email, text, social messaging, etc. In an increasingly chaotic digital world, it's becoming increasingly difficult for users to manage their digital interactions with service providers, smart devices, and individuals. A user may have separate software applications for requesting services from a number of service providers, for controlling a number of smart devices, and for communicating with individuals. Each of these separate software applications may have different user interfaces and barriers to entry.

The subject matter of the present disclosure is directed to overcoming, or at least reducing the effects of, one or more of the problems set forth above. To address these and other issues, techniques that enable seamless, multi-format, multi-protocol communications are described herein.

BRIEF DESCRIPTION OF THE DRAWINGS

FIG. 1 is a block diagram illustrating a network architecture infrastructure according to one or more disclosed embodiments.

FIG. 2A is a block diagram illustrating a computer which could be used to execute the multi-format/multi-protocol communication approaches described herein according to one or more of disclosed embodiments.

FIG. 2B is a block diagram illustrating a processor core, which may reside on a computer according to one or more of disclosed embodiments.

FIGS. 3A through 3G show examples of a multi-protocol, multi-format inbox, according to one or more disclosed embodiments.

FIG. 4 is a block diagram of a universal interaction platform, according to one or more disclosed embodiments.

FIGS. 5A and 5B are examples of publicly available information regarding a service provider that may be downloaded by the universal interaction platform, according to one or more disclosed embodiments.

FIG. 6A shows exemplary protocols and formats required to output an instruction to a service provider via an API.

FIG. 6B shows an exemplary format of a response from a service provider.

FIG. 7 shows an exemplary format of an object sent to and from a smart device

FIG. 8 shows a flowchart of a method for communicating with a smart device or a service provider, according to one or more disclosed embodiments.

FIGS. 9A and 9B show a flowchart of a method for determining the protocols and formats required by a smart

2

device or service provider to interact with the smart device or service provider via an API, according to one or more disclosed embodiments.

FIGS. 9C and 9D show a flowchart of a process for determining the protocols and formats to obtain information regarding a service provider that provides the information in an unstructured format or in an unknown structure, according to one or more disclosed embodiments.

DETAILED DESCRIPTION

Disclosed are apparatuses, methods, and computer readable media for integrating communications for computing devices across multiple formats and multiple protocols. More particularly, but not by way of limitation, this disclosure relates to apparatuses, methods, and computer readable media to permit computing devices, e.g., smartphones, tablets, laptops, wearables, and the like, to present users with a multi-protocol, multi-format inbox for communicating with people and service providers and for controlling devices via multiple formats and communication protocols.

Referring now to FIG. 1, a network architecture infrastructure 100 is shown schematically. The infrastructure 100 includes computer networks 110, interaction platform devices 120, client devices 130, third party communications devices 140, third party service provider devices 150, and smart devices 160.

The computer networks 110 may include any communications network that allows computers to exchange data, such as the internet 111, local area networks 112, corporate networks 113, cellular communications networks 114, etc. Each of the computer networks 110 may operate using any number of network protocols (e.g., TCP/IP). The computer networks 110 may be connected to each other and to the various computing devices described herein (e.g., the interaction platform devices 120, the client devices 130, the third party communications devices 140, the third party service provider devices 150, and the smart devices 160) via hardware elements such as gateways and routers.

The interaction platform devices 120 may include one or more servers 121 and one or more storage devices 122. The one or more servers 121 may include any suitable computer hardware and software configured to provide the features disclosed herein. The storage devices 122 may include any tangible computer-readable storage media including, for example, read-only memory (ROM), random-access memory (RAM), magnetic disc storage media, optical storage media, solid state (e.g., flash) memory, etc.

The client devices 130 may include any number of computing devices that enable an end user to access the features disclosed herein. For example, the client devices 130 may include, for example, desktop computers 131, tablet computers 132, mobile phone 133, notebook computers 134, etc.

The third party communications devices 140 may include email servers such as a GOOGLE® or YAHOO!® email server (GOOGLE is a registered service mark of Google Inc. YAHOO! is a registered service mark of Yahoo! Inc.), third party instant message servers such as a YAHOO!® Messenger or AOL® Instant Messaging server (AOL is a registered service mark of AOL Inc.), third party social network servers such as a FACEBOOK® or TWITTER® server (FACEBOOK is a registered trademark of Facebook, Inc. TWITTER is a registered service mark of Twitter, Inc.), cellular service provider servers that enable the sending and receiving of messages such as email messages, short message service (SMS) text messages, multimedia message

service (MMS) messages, or any other device that enables individuals to communicate using any protocol and/or format.

The third party service devices **150** may include any number of computing devices that enable an end user to request one or more services via network communication.

The smart devices **160** may include any number of hardware devices that communicate via any of the computer networks **110** and are capable of being controlled via network communication.

As described in more detail below, the universal interaction platform allows users to interact with individuals, service providers, and smart devices **160** by sending a message (in the form of a message object) from a client device **130**. The message object is output by the client device **130** for transmittal to the server **121**. When the user is interacting with a service provider, the universal interaction platform formats an instruction for the third party service device **150** associated with the service provider and outputs the instruction from the server **121** for transmittal to the third party service device **150**. Similarly, when the user is interacting with a smart device **160**, the universal interaction platform formats an instruction for the smart device **160** and outputs the instruction from the server **121** for transmittal to the smart device **160**. The server **121** may also receive a response from the third party service device **150** or smart device **160**, format a response message (in the form of a response message object) for the user, and output the response message object for transmittal to the client device **130**.

Referring now to FIG. 2A, an example processing device **200** for use in the communication systems described herein according to one embodiment is illustrated in block diagram form. Processing device **200** may serve in, e.g., a server **121** or a client device **130**. Example processing device **200** comprises a system unit **205** which may be optionally connected to an input device **230** (e.g., keyboard, mouse, touch screen, etc.) and display **235**. A program storage device (PSD) **240** (sometimes referred to as a hard disk, flash memory, or non-transitory computer readable medium) is included with the system unit **205**. Also included with system unit **205** may be a network interface **220** for communication via a network (either cellular or computer) with other mobile and/or embedded devices (not shown). Network interface **220** may be included within system unit **205** or be external to system unit **205**. In either case, system unit **205** will be communicatively coupled to network interface **220**. Program storage device **240** represents any form of non-volatile storage including, but not limited to, all forms of optical and magnetic memory, including solid-state storage elements, including removable media, and may be included within system unit **205** or be external to system unit **205**. Program storage device **240** may be used for storage of software to control system unit **205**, data for use by the processing device **200**, or both.

System unit **205** may be programmed to perform methods in accordance with this disclosure. System unit **205** comprises one or more processing units, input-output (I/O) bus **225** and memory **215**. Access to memory **215** can be accomplished using the communication bus **225**. Processing unit **210** may include any programmable controller device including, for example, a mainframe processor, a mobile phone processor, or, as examples, one or more members of the INTEL® ATOM™, INTEL® XEON™, and INTEL® CORE™ processor families from Intel Corporation and the Cortex and ARM processor families from ARM. (INTEL, INTEL ATOM, XEON, and CORE are trademarks of the

Intel Corporation. CORTEX is a registered trademark of the ARM Limited Corporation. ARM is a registered trademark of the ARM Limited Company). Memory **215** may include one or more memory modules and comprise random access memory (RAM), read only memory (ROM), programmable read only memory (PROM), programmable read-write memory, and solid-state memory. As also shown in FIG. 2A, system unit **205** may also include one or more positional sensors **245**, which may comprise an accelerometer, gyrometer, global positioning system (GPS) device, or the like, and which may be used to track the movement of user client devices.

Referring now to FIG. 2B, a processing unit core **210** is illustrated in further detail, according to one embodiment. Processing unit core **210** may be the core for any type of processor, such as a micro-processor, an embedded processor, a digital signal processor (DSP), a network processor, or other device to execute code. Although only one processing unit core **210** is illustrated in FIG. 2B, a processing element may alternatively include more than one of the processing unit core **210** illustrated in FIG. 2B. Processing unit core **210** may be a single-threaded core or, for at least one embodiment, the processing unit core **210** may be multithreaded, in that, it may include more than one hardware thread context (or "logical processor") per core.

FIG. 2B also illustrates a memory **215** coupled to the processing unit core **210**. The memory **215** may be any of a wide variety of memories (including various layers of memory hierarchy), as are known or otherwise available to those of skill in the art. The memory **215** may include one or more code instruction(s) **250** to be executed by the processing unit core **210**. The processing unit core **210** follows a program sequence of instructions indicated by the code **250**. Each instruction enters a front end portion **260** and is processed by one or more decoders **270**. The decoder may generate as its output a micro operation such as a fixed width micro operation in a predefined format, or may generate other instructions, microinstructions, or control signals which reflect the original code instruction. The front end **260** may also include register renaming logic **262** and scheduling logic **264**, which generally allocate resources and queue the operation corresponding to the convert instruction for execution.

The processing unit core **210** is shown including execution logic **280** having a set of execution units **285-1** through **285-N**. Some embodiments may include a number of execution units dedicated to specific functions or sets of functions. Other embodiments may include only one execution unit or one execution unit that can perform a particular function. The execution logic **280** performs the operations specified by code instructions.

After completion of execution of the operations specified by the code instructions, back end logic **290** retires the instructions of the code **250**. In one embodiment, the processing unit core **210** allows out of order execution but requires in order retirement of instructions. Retirement logic **295** may take a variety of forms as known to those of skill in the art (e.g., re-order buffers or the like). In this manner, the processing unit core **210** is transformed during execution of the code **250**, at least in terms of the output generated by the decoder, the hardware registers and tables utilized by the register renaming logic **262**, and any registers (not shown) modified by the execution logic **280**.

Although not illustrated in FIG. 2B, a processing element may include other elements on chip with the processing unit core **210**. For example, a processing element may include memory control logic along with the processing unit core

5

210. The processing element may include I/O control logic and/or may include I/O control logic integrated with memory control logic. The processing element may also include one or more caches.

Multi-Protocol, Multi-Format Inbox

FIG. 3A shows an example of a multi-protocol, person-centric, multi-format inbox **300**, according to one or more disclosed embodiments. The inbox **300** shown in FIG. 3A may, for example, be displayed on the display of any of the client devices **130** such as a desktop computer **131**, a tablet computer **132**, a mobile phone **133**, a notebook computer **134**, or other computing device. In certain embodiments, elements of the inbox **300** may be interacted with by a user utilizing a touchscreen interface or any other suitable input interface.

The inbox **300** enables user to interact with people across multiple formats and multiple protocols (e.g., email, text, voice, video, social messaging, etc.) as described, for example, in U.S. patent application Ser. No. 14/141,551, filed Dec. 27, 2013; U.S. patent application Ser. No. 14/168,815, filed Jan. 30, 2014; U.S. patent application Ser. No. 14/461,967, filed Aug. 18, 2014; and U.S. patent application Ser. No. 14/579,712, filed Dec. 22, 2014. The disclosure of each of the foregoing patent applications (collectively referred to herein as “The Entefy personal communications patent applications”) are hereby incorporated by reference. Each person is represented on a row. In the example of FIG. 3A, rows **304** and **308** represent people, specifically exemplary individuals ‘Emma Poter’ and ‘Peter Ehrmanntraut.’

As is shown across the top row **302** of the inbox **300** also enables users to interact with service providers and devices via multiple formats and communication protocols. All messages may be combined together into a single, unified inbox, as is shown in FIG. 3A.

In the example of FIG. 3A, row **316** represents a smart device **160**, for example a smart thermostat.

In the example of FIG. 3A, row **315** represents a service provider, for example an on-demand ride service.

Referring now to FIG. 3B, an example of an interface **320** to interact with a particular smart device **160** is shown, according to one or more disclosed embodiments. The interface **320** is output to the user, for example, if the user selects row **316** of the interface **300**.

The top portion **321** of the interface **320** includes a pictorial icon **322** and the name of the particular smart device **160** (in this example, a smart thermostat) as well as buttons to view and/or change settings related to the smart device **160**. The interface **320** also includes a device interface **325** to control the smart device **160**. In this instance, up arrow **326** increases the target temperature **327** of the smart thermostat and the down arrow **328** decreases the target temperature **327**. As described in more detail below, the universal interaction platform allows a user to interact with the smart device **160** by sending messages to the smart device **160** using natural language. In the example shown in FIG. 3B, row **330** represents messages to and from one smart thermostat and row **332** represents messages to and from all of the user’s smart thermostats. The universal interaction platform also allows a user to interact with a provider of the smart device **160**. In the example shown in FIG. 3B, row **334** represents promotional messages from the provider of the smart thermostat.

Referring now to FIG. 3C, an example of an interface **340** for messages to and from a particular smart device **160** is shown, according to one or more disclosed embodiments. The interface **340** is output to the user, for example, if the user selects row **330** of the interface **320**.

6

As described in more detail below, the interface **340** allows users to interact with the smart device **160** by sending messages using natural language. The universal interaction platform also receives responses from the smart device **160**, formats the responses in the form of messages for the user from the smart device **160**, and outputs the messages to the user via the interface **340**. The interface **340** includes message history **342** showing messages from the user to the smart device **160** and responses from the smart device **160** in the form of messages to the user from the smart device **160**. Messages to the smart device **160** may include text (input, for example, by a keyboard or virtual ‘on screen’ keyboard output by a touchscreen) or sound (input, for example, by a microphone). The interface **340** may include a text entry box **344** and a microphone icon **346** to record sound or convert speech to text. A back button **348** may be used to return to the interface **320** and a send button **349** may be used to send the message to the smart device **160**.

Referring now to FIG. 3D, an example of an interface **350** for promotional messages from the provider of a smart device **160** is shown, according to one or more disclosed embodiments. The interface **350** is output to the user, for example, if the user selects row **334** of the interface **320**.

The interface **350** includes a message area **352** where messages from the provider of the smart device **160** are displayed to the user. The interface **350** may also include a call button **354** to place a telephone call to the provider of the smart device **160**. Similar to the interface **340**, the interface **350** may also include a text entry box **344** to enter text-based response to the provider of the smart device **160**, a send button **349** to send the text-based response, a microphone icon **346** to record sound or convert speech to text, and a back button **348** to return to the interface **320**.

Referring now to FIG. 3E, an example of an interface **360** to interact with a particular service provider is shown, according to one or more disclosed embodiments. The interface **360** is output to the user, for example, if the user selects row **315** of the interface **300**.

The top portion **361** of the interface **360** includes a pictorial icon **362** and the name of the particular service provider (in this example, a ride service) as well as buttons to view and/or change settings related to the service provider. The interface **360** also includes a service provider interface **362** to interact with the service provider. As described in more detail below, the universal interaction platform allows a user to request services from a service provider by sending messages using natural language. In the example shown in FIG. 3E, row **366** represents messages requesting services from the service provider and messages from the service provider regarding those services. In the example shown in FIG. 3E, row **368** represents promotional messages from the service provider.

Referring now to FIG. 3F, an example of an interface **370** for messages to and from a particular service provider is shown, according to one or more disclosed embodiments. The interface **370** is output to the user, for example, if the user selects row **366** of the interface **360**.

As described in more detail below, the interface **370** allows users to interact with the service provider by sending messages using natural language. The universal interaction platform also receives responses from the service provider, formats the responses in the form of messages for the user from the service provider, and outputs the messages to the user via the interface **370**. The interface **370** includes message history **372** showing messages from the user to the service provider and responses from the service provider in the form of messages to the user from the smart device **160**.

Messages to the service provider may include text (input, for example, by a keyboard or virtual ‘on screen’ keyboard output by a touchscreen) or sound (input, for example, by a microphone). Similar to the interface **340**, the interface **370** may include a text entry box **344** to enter text-based messages to the service provider, a microphone icon **346** to record sound or convert speech to text, a back button **348** to return to the interface **360** and a send button **349** to send the message to service provider. Each service provider may have more than one protocol for requesting services from that service provider and/or for outputting responses to service requests. For example, sending a message requesting a car may require outputting instructions to an API while the ride service may send responses by SMS and email. SMS messages may be received from more than one phone number. Email messages may be received from more than one email address (e.g., receipts@rideservice.xyz, support@rideservice.xyz, etc.). Regardless of protocol or format, the universal interaction platform described herein combines all messages to and from each service provider regarding service requests into a single interface **370**.

Referring now to FIG. 3G, an example of an interface **380** for promotional messages from a particular service provider is shown, according to one or more disclosed embodiments. The interface **380** is output to the user, for example, if the user selects row **368** of the interface **360**.

Similar to the interface **350**, the interface **380** includes a message area **352** where messages from the service provider are displayed to the user, a call button **354** to place a telephone call to the service provider, a text entry box **344** to enter text-based response to the service provider, a send button **349** to send the text-based response, a microphone icon **346** to record sound or convert speech to text, and a back button **348** to return to the interface **360**.

Referring now to FIG. 4, the universal interaction platform **400** is illustrated in further detail, according to one or more disclosed embodiments. The universal interaction platform **400** includes a messaging service **420**, an IoT (Internet of Things) service **430**, a natural language classifier **440**, and an API analyzer **460**. The IoT service **430** includes a number of IoT handlers **432**. The messaging service **420**, the IoT service **430**, the IoT handlers **432**, the natural language classifier **440**, and the API analyzer **460** may be implemented as software modules stored on the storage device **122** and executed by the server **121**.

The messaging service **420** sends and receives messages to and from the client devices **130** (via the inbox **300** and the interfaces **360**, **380**, etc. as described above). The messaging service **420** also communicates with the third party communications devices **140** as described, for example, in the Entefy personal communications patent applications, which are referenced above and incorporated by reference.

The IoT service **430** includes an IoT handler **432** for each service provider or smart device **160** supported by the universal interaction platform **400**. Each IoT handler **432** may interact with a particular service provider or type (e.g., brand, model, etc.) of smart device **160**. For example, IoT handler **432a** may interact with the ride service described above while IoT handler **432i** may interact with the smart thermostat described above.

The natural language classifier **440** is a machine learning tool that derives meaning from natural language by applying rules developed by analyzing a large corpora of real-world examples. As described in more detail below, the corpora may include publicly-available data sets as well as natural language documents collected by the universal interaction platform **400** such as messages output by users, descriptions

of the services provided by the service providers, documentation regarding the services and the smart devices **160**, etc.

The universal interaction platform **400** enables users to interact with smart devices **160** and service providers via the multi-protocol, multi-format inbox **300** illustrated in FIGS. 3A-3G.

In some instances, the universal interaction platform **400** obtains information regarding a service provider by downloading publicly-available information regarding the service provider and storing that information in a structured data set such that the universal interaction platform **400** is able to respond to user queries.

FIGS. 5A and 5B are examples of publicly available information regarding a service provider (in this example, a commuter train system) that may be downloaded by the universal interaction platform **400**, according to one or more disclosed embodiments. As shown in FIG. 5A, the universal interaction platform **400** may download information from the commuter train system website including, for example, the departure times of trains from stations and the locations of each of the stations. The universal interaction platform **400** stores the downloaded information in a structured data set such that the universal interaction platform **400** is able to provide the information in response to user queries. For example, in response to a query at 7:30 am regarding the next northbound train from Mountain View, the universal interaction platform **400** is able to respond that the next northbound train is scheduled to depart from Mountain View at 7:37.

The universal interaction platform **400** may periodically download information from service providers so as to provide real-time or near real-time information to users. Referring to FIG. 5B, for example, the commuter train system website is periodically updated with predicted departure information at each of the stations within the commuter train system. The universal interaction platform **400** may, for example, periodically download the predicted departure information, store the predicted departure information as part of the structured data set, and output the predicted departure information in response to user queries. For example, in response to a user query regarding the next train to from Palo Alto to Menlo Park, the universal interaction platform **400** determines that the 231 and 233 trains stop at Menlo Park based on the information in FIG. 5A and determines that the 231 train is predicted to depart in 19 minutes based on the information in FIG. 5B.

In other instances, a service provider may maintain an application programming interface (API) that enables the universal interaction platform **400** to receive information regarding the services offered by the service provider and/or send instructions to the service provider. In this instance, the API documentation may specify the services provided by the service provider and the protocols and formats required by the service provider to request information regarding those services and/or to request those services.

FIG. 6A shows exemplary protocols and formats required to output an instruction to a service provider via an API (in this example, the ride service described above). The API may be configured to allow the universal interaction platform **400** to perform a function (i.e., request information or request a service) by outputting an instruction using a specified method to a specified endpoint with specified parameters. The methods, endpoints, and parameters may be specified in the API documentation. As shown in FIG. 6A, the ride service maintains an API that allows the universal interaction platform **400** to request, for example, a list of available services (“List products”) at a particular location

by specifying the longitude and latitude of the particular location and outputting an instruction to the specified endpoint (/v1/products) using the specified method (GET). The rider service API also allows the universal interaction platform 400 to request a service ("Create ride request") by outputting an instruction specifying the service (i.e., "product_id") and the start location (i.e., "start_latitude" and "start_longitude") and other optional parameters and to the specified endpoint (/v1/requests) using the specified method (POST).

An API may also specify the protocol for receiving information from the service provider and the format of the information output by the service provider. FIG. 6B shows an exemplary format of a response from a service provider (in this instance, a response from Uber to a request for a list of available services). As shown in FIG. 6B, the Uber API outputs a status code (200 OK) to indicate that the request was successfully processed and details regarding available services. In this instance, a non-luxury car ("display_name": "CarX"; "capacity": 4) and a sport utility vehicle ("display_name": "CarXL"; "capacity": 6) are available. The protocol for receiving information from the service provider and the format of the information output by the service provider may also be specified by the service provider in the API documentation.

In other instances, a smart device 160 may have an API that enables the universal interaction platform 400 to receive information stored in the smart device 160 and/or send instructions to the smart device 160 by sending and receiving an object to and from the smart device 160. The object may be, for example, in JavaScript Object Notation (JSON) format, extensible markup language (XML) format, etc. The protocol for communicating with the smart device 160 and the format of the object may be specified by the provider of the smart device 160 in the API documentation.

FIG. 7 shows an exemplary format of an object sent to and from a smart device 160 (in this example, the smart thermostat described above) to receive information from and control the smart device 160. For example, the universal interaction platform 400 may receive an object from the thermostat with the data values shown in FIG. 7, store the data shown in FIG. 7, and output the information shown in FIG. 7 in response to a query from a user regarding the thermostat. For example, if a user submits a query regarding the ambient temperature, the universal interaction platform 400 outputs a message indicating that the ambient temperature is 72 degrees Fahrenheit based on the message object received from the thermostat.

In order to control the smart thermostat, the thermostat requires an object with the same data values shown in FIG. 7 and the relevant metadata for the particular thermostat. Accordingly, in response to a request from a user to set the target temperature to 68 degrees Fahrenheit, the universal interaction platform 400 outputs an object in the format shown in FIG. 7 (with the target_temperature_f value set to 68) for transmittal to the smart device 160 via, for example, the LAN 112, the internet 111, and the LAN 112.

FIG. 8 shows a flowchart 800 of a method for communicating with a smart device 160 or a service provider, according to one or more disclosed embodiments.

A client device 130 outputs a message object in step 802. The message object may be, for example, a universal message object in JavaScript Object Notation (JSON) format. The message object may include the body of the message input by the user, for example, via a message interface (e.g., 360, 380) and information indicative of the

recipient (i.e., a smart device 160 or service provider) selected by the user via the inbox 300.

The messaging service 420 receives the message object in step 804 and saves a copy of the message in a database in step 806. The database may be stored, for example, in the storage device 122. The messaging service 420 determines the identity of the recipient in step 808. If the recipient is a person (Step 810: Yes), the messaging service 420 outputs the message to the recipient in step 812 (as described, for example, in "the Entefy personal communications patent applications, which are referenced above and incorporated by reference).

If the recipient is a smart device 160 or a service provider (Step 810: No), the natural language classifier 440 parses the message content to determine the intent of the user in step 814. The natural language classifier 440 determines user intent by making a probabilistic determination based on a large data set of information including previous messages output by the user and other users, documentation regarding the selected smart device 160 or service provider, publicly available and other natural language data sets. For each smart device 160 and service provider supported by the universal interaction platform 400, for example, the universal interaction platform 400 may store a map in the storage device 122 that associates natural language expressions previously sent by users (or that could potentially be sent by users) with user intents relevant to the smart device 160 or service provider. The natural language classifier 440 determines the user intent by finding the natural language expression that is most similar to the message sent by the user and selecting the user intent associated with the natural language expression. Using a smart thermostat (e.g., Next) as an example, an exemplary map is shown in Table 1.

TABLE 1

User Intent	Natural Language Expression
Set target temperature to <temp>	"Set the temperature to <temp>" "Set temp to <temp>" "Set thermostat to <temp>" "I'd like it to be <temp> in here" "Make it <temp>"
Increase target temperature by <delta_temp>	"Increase the temperature by <delta_temp>" "Make it <delta_temp> hotter" "Make it <delta_temp> warmer" "Bump it up <delta_temp> degrees"
Decrease target temperature by <delta_temp>	"Decrease the temperature by <delta_temp>" "Make it <delta_temp> cooler" "Make it <delta_temp> colder" "Drop it down <delta_temp> degrees"
Output target temperature	"What are you set to?"
Output ambient temperature	"What's the temperature?"

If, for example, the universal interaction platform 400 receives a message from a user stating "I'd like it to be 68 in my house," the natural language classifier 440 compares the message received from the user with the natural language expressions stored in the map and determines the natural language expression ("I'd like it to be <temp> in here") that is most similar to the message received from the user ("I'd like it to be 68 in my house") and selects the user intent (in this instance, to set the temperature to 68) associated with the most similar natural language expression.

The universal interaction platform 400 also determines user intent based on other factors, such as the location of the client device 130 and/or the time the message object was output by the client device 130 (or received by the server 121). Returning to the ride service example above, a user

may output a message requesting a ride and the universal interaction platform 400 may determine that the user intent is to request a ride from the current location of the client device 130. Returning to the commuter train system example above, a user near may output a message asking about the next train to San Francisco. The universal interaction platform 400 may determine that the client device 130 is closest to Palo Alto and, therefore, may determine that, in this instance, the user intent is to request the departure time for the next train to San Francisco from Palo Alto. Furthermore, the universal interaction platform 400 may determine that the client device 130 is closest to Palo Alto but is not close enough for the user to board the next train to San Francisco. Accordingly, the universal interaction platform 400 may determine that the user intent, in this instance, is to request the departure time for the second train to San Francisco from Palo Alto.

The universal interaction platform 400 also determines user intent based on previous messages output by the user via the inbox 300. Accordingly, universal interaction platform 400 may also store a map of natural language expressions for a particular user. Returning to the smart thermostat example above, an exemplary map of natural language expressions for a particular user is shown in Table 2.

TABLE 2

User Intent	Natural Language Expression
degrees Fahrenheit	"degrees"
2 degrees Fahrenheit	"a few degrees"
	"a bit"
Increase temperature by <delta_temp>	"Bump it up <delta_temp> degrees"
Decrease temperature by <delta_temp>	"Drop it down <delta_temp> degrees"
Output ambient temperature	"Is it hot in here?"
Increase temperature by 2 degrees F.	"I'm cold"
Set target temperature to 68 degrees F.	"Brian is coming over"

If, for example, the universal interaction platform 400 receives a message from the user associated with Table 2 stating "Make it a bit warmer", the natural language classifier 440 compares the message received from the user with the natural language expressions stored in Tables 1 and 2, determines the natural language expressions ("Make it <delta_temp> warmer" and "a bit") that are most similar to the messages received from the user ("Make it a bit warmer"), and determines the intent of the user. In this example, the intent of the user to increase the temperature is found in Table 1 and the exact value of the increase is found in Table 2.

The universal interaction platform 400 develops the map of natural language expressions for a particular user based on previous messages output by the user via the inbox 300. For example, the first time a user outputs a message to the universal interaction platform 400 for transmittal to the smart thermostat and the universal interaction platform 400 cannot determine the user intent based on the map used for all users shown in Table 1 (for example, when the user says "a bit" or "I'm cold" or "Brian is coming over"), the universal interaction platform 400 may ask the user to clarify how the user would like the smart thermostat to respond and then store that user intent for future use when the user outputs another message using similar language. Returning to the ride service example above, if the user requests a ride from "Brian's house", the universal interaction platform 400 may ask "Where is Brian's house?" (or "Are you currently at Brian's house?") and then map the

user's response (or the location of the client device 130) to "Brian's house" for future use.

Because there is a finite number of relevant instructions for each smart device 160 or service provider, there is a finite number of relevant user intents. Accordingly, the universal interaction platform 400 is able to map each user intent to any number of natural language expressions. The natural language classifier 440 is then able to quickly and accurately determine the user intent based on the natural language expressions used by the user.

The IoT handler 432 associated with the selected service provider or smart device 160 formats an instruction for the smart device 160 or service provider in step 816. The universal interaction platform 400 stores the formats and protocols required by each of the smart devices 160 and service providers supported by the platform in the storage device 122. Additionally, the universal interaction platform stores a map associating each of the user intents described above with a properly formatted instruction for the smart device 160 and service provider.

Using a smart thermostat again as an example, a map associating each of the user intents described above with a properly formatted instruction is shown in exemplary Table 3.

TABLE 3

User Intent	Instruction
Set temperature to <temp>	target_temperature_f: <temp>
Increase temperature by <delta_temp>	target_temperature_f: target_temperature_f + <delta_temp>
Decrease temperature by <delta_temp>	target_temperature_f: target_temperature_f - <delta_temp>
Output target temperature	RETURN target_temperature_f
Output ambient temperature	RETURN ambient_temperature_f

In the smart thermostat example above, the IoT handler 432 associated with the type of smart thermostat formats an instruction to set the temperature to 68 degrees Fahrenheit by building a JSON object with the metadata for the specific smart thermostat and the required data values (for example, device_id: peyijNo0IldT2Y1IVtYaGQ; locale: en-US; . . . target_temperature_f: 68) and outputting the JSON object for transmittal to the thermostat.

Using the ride service again as an example, the IoT handler 432 associated with the ride service request formats an instruction to request a ride by including all of the required parameters specified in the API documentation (for example, start_latitude: 37.334381; start_longitude: -121.89432; end_latitude: 37.77703; end_longitude: -122.419571; product_id: a1111c8c-c720-46c3-8534-2fcd730040d) and outputting the instruction to the API endpoint (/v1/requests) specified in the API documentation.

In other instances, the IoT service 430 may determine that the most probable way to interact with a service provider is to send an email to the service provider. For example, a user may input a query requesting a quote for new electric service from XYZ Electric. The universal interaction platform 400, having previously downloaded information from the XYZ website, may not have the information necessary to respond to the user query but may have determined that requests for services may be sent by email to bob@xyzelectric.com. Accordingly, the IoT Service 430 may determine that the method that will most probably return an answer to the user query is to have the messaging service 420 format an email with the fields required for that particular service provider (for example, to: bob@xyzelectric.com) and a body of the

13

email indicative of the user intent (for example, body: “A user has requested a quote for a new electric service.”) and output the email message to the service provider.

If the IoT handler **432** associated with the device **160** or service provider selected by the user is unable to format the instruction for the smart device **160** or service provider (Step **818**: No), the natural language classifier **440** parses the message object (received from the user in step **804**) to determine the relevant device category or service category in step **822**. For example, the relevant category may be transit.

The IoT service **430** determines the IoT handlers **432** that are relevant to the device category or service category in step **824**. The relevant IoT handlers **432** may be selected from among the IoT handlers **432** associated with smart devices or services set up by the user.

The IoT service **430** outputs the message object to all of the relevant IoT handlers **432** in step **826**. Each of the IoT handlers **834** respond to the message object with a given confidence level that the message object is relevant to the smart device **160** or service provider associated with that IoT handler **432** in step **828**. The IoT service **430** selects the IoT service **432** with the highest confidence level in step **830**. The selected IoT handler **432** formats an instruction in step **831** as described above with reference to step **816**.

The IoT handler **432** (or the messaging service **420**) outputs the instruction for transmittal to the smart device **160** or third party service provider device **150** in step **820**.

The IoT handler **432** may receive a response from the service provider device **150** or the smart device **160** in step **832**. The response may be in the form of an object, an email message, an SMS message, etc. As described above with reference to FIGS. 6B and 7B, responses from service provider devices **150** and smart devices **160** have a format that is known to the universal interaction platform **400**. For example, the format of response messages may be specified in the API documentation. In another example, the format of response messages may be determined by parsing previous response messages from the same smart device **160** or service provider device **150**. Accordingly, the universal interaction platform **400** is able to parse the response for information relevant to the user and output a message to the user. As shown in FIGS. 3C and 3E, the response message to the user is output by the universal interaction platform **400** via the multi-format, multi-protocol inbox **300** as if the response message is from the smart device **160** or service provider.

The messaging service **422** formats the response message for the user in step **834**. The response message is output using natural language. The tone of the natural language may be based on user preferences stored, for example, in the storage device **122**. The user preferences may specify a different tone for different services. For example, a user may specify a more formal tone (e.g., “Sir, your car has arrived” and “Thank you. We hope you enjoyed your trip”) when the requested service is a luxury car and a more informal tone (e.g., “Your car is here” and “Trip complete”) when the requested service is not a luxury car.

Additionally or alternatively, the tone of response messages output on behalf of a service provider or a smart device **160** may be specified by the service provider or provider of the smart device. A service provider or provider of a smart device may specify different tones for response messages based on the demographics of the user (age, gender, etc.). The preferences of the service providers and/or providers of smart devices **160** may be stored in the storage device **122**.

14

The universal interaction platform **400** updates the user preferences in the database in step **836**.

The messaging service **420** outputs the response message to the user in step **838**.

AI-Driven API Analyzer

As described above, the universal interaction platform **400** outputs instructions to third party smart devices **160** and service providers to perform certain functions. The protocols and formats required by a device or service provider to perform those functions may be determined manually. Additionally or alternatively, those protocols and formats may be determined by the API analyzer **460** as described below.

FIGS. 9A and 9B show a flowchart of a process **900a** for determining the protocols and formats required by a smart device **160** or service provider to interact with the smart device **160** or service provider using natural language via an API, according to one or more disclosed embodiments.

An API endpoint for a service provider or smart device is identified in step **902a**. In some instances, a user (for example, a developer for the service provider or provider of the smart device **160**) may identify an API endpoint by registering a device **160** or service with the universal interaction platform **400**. For example, the API analyzer **460** may include a user interface that allows a user to enter the universal resource locator (URL) of the API endpoint. In other instances, the universal interaction platform **400** may identify the API endpoint, for example by crawling the internet and identifying devices **160** or service providers to add to the universal interaction platform **400**.

A service category or device category is determined in step **904a**. For example, the service category for a ride service may be “on-demand transit” while the device category for a smart thermostat may be “appliance” or “smart home.” The service category or device category may be selected by the user. For example, the API analyzer **460** may include a user interface that allows a user to select the device category or service category. Additionally or alternatively, the natural language classifier **440** may determine a device category or service category by analyzing documentation (e.g., a website and/or API documentation) regarding the service provider or smart device **160**.

A category-specific corpus is selected in step **906a** based on the service category or device category determined in step **904a**. A corpus is a collection of information about the words and phrases of a language and about the lexical categories to which those words belong. The API analyzer **460** may store a category-specific corpus for each of a plurality of potential service categories and device categories in the storage device **122**. For each word and/or phrase in the category-specific corpus, the category-specific corpus may include, for example, definitions, parts of speech, synonyms, lexical connections to other words or phrases, etc. The category-specific corpus may also include weighted probabilities that each word or phrase in the category-specific corpus is related to other words or phrases in the category-specific corpus. As additional service providers and smart devices **160** are added to the universal interaction platform **400** over time, the category-specific corpora may be modified to include additional words and phrases that are relevant to that particular category. The API analyzer **460** may also store a global corpus that may be used for all smart devices **160** and service providers or for the smart devices **160** and service providers that are unrelated to the category-specific corpora.

As described in detail below, the API analyzer **460** forms a service-specific or device-specific corpus by appending the

15

category-specific corpus (or global corpus) to include words or phrases relevant to the specific smart device **160** or service.

The user is prompted to manually identify service-specific or device-specific information in step **908**. Service-specific or device-specific information may include words or phrases that are relevant to the specific service or smart device **160**. The API analyzer **460** may enable the user, for example, to manually describe service-specific or device-specific words or phrases, to upload a service-specific or device-specific dictionary, to identify an object (e.g., a JSON object, an XML object, etc.) that is relevant to the service-specific or device-specific API, etc. If the user manually identifies service-specific or device-specific information (Step: **910**: Yes), the API analyzer **460** appends the category-specific corpus (selected in step **906a**) to include the service-specific or device-specific information in step **911**. Because the category-specific corpus may be appended to include service-specific or device-specific information, it is referred to below as a service-specific or device-specific corpus.

The user is prompted to enter a URL of API documentation in step **912**. The API analyzer **460** parses the API documentation in step **914**. The API analyzer **460** may determine, for example, the functions available via the API, and the API endpoints, methods, and parameters required to request those functions (as shown, for example, in FIG. **6A**). If the API requires that an object (as shown, for example, in FIG. **7**) be output to a smart device **160** or service provider device **150**, the API analyzer **460** may determine, for example, the data values of the object, whether a function may be performed by changing one or more of the data values, etc.

The API analyzer **460** tests the API in step **916**. Because the API documentation parsed in step **914** may be incomplete or inaccurate, the API analyzer **460** may determine, for example, whether the API may be used to perform additional functions (for example, by including different parameters than are identified in the API documentation). The API analyzer **460** may also receive and parse response messages received from the API.

The API analyzer **460** uses the service-specific or device-specific corpus described above to make probabilistic determinations of the relationships between words and phrases related to the service provider or smart device **160** (e.g., words or phrases used in the API documentation, the API endpoints, the API parameters, the data values of the object, etc.) in step **918**. For example, the API analyzer **460** may determine whether a word or phrase is a subset of another word or phrase, whether those words or phrases are synonymous, whether those words or phrases are unrelated, etc.

The API analyzer **460** may prompt the user to verify the previous determinations in step **920**. For example, the API analyzer **460** may display the API endpoints, methods, and parameters identified in step **914** via a graphical user interface and prompt the user to confirm whether those API endpoints, methods, and parameters are accurate and complete. The API analyzer **460** may also prompt the user to verify whether the relationships between words and phrases determined in step **918** are accurate. (For example, one API endpoint identified in step **914** may be `/calendars/{calendarId}/events/{eventId}`. Based on the API endpoint, the API analyzer **460** may determine that ‘event’ (or ‘events’) is not synonymous with ‘calendar’ or ‘calendars’ but is instead a separate referencable object. However, the API analyzer **460** may determine that there still exists a probability that ‘calendar’ and ‘events’ refer to the same thing. Accordingly, the API analyzer **460** may prompt the user to verify the

16

previous determination that ‘calendar’ and ‘events’ are not synonymous but rather are a separate referencable objects.)

If the user indicates that one or more of the previous determinations were invalid (Step **922**: No), the API analyzer **460** appends the service-specific or device-specific corpus in step **924** and returns to step **914**. The API analyzer **460** may then re-parse the API documentation to determine API functions, endpoints, methods, and parameters (step **914**), re-test the API (step **916**, if necessary), make additional determinations regarding the relationships between words and phrases related to the service provider or smart device **160** (step **918**) and prompt the user to verify the additional determinations (step **920**) with the additional information in the device-specific or service-specific corpus.

In step **926a**, the API analyzer **460** prompts the user to identify natural language expressions (i.e., instructions and/or queries) that are relevant to the smart device **160** or service provider (as described above, for example, with reference to Table 1) and the API functions and parameters necessary for the smart device **160** or service provider to respond to those instructions or queries (as described above, for example with reference to Table 3).

If the user maps API functions and parameters with natural language expressions (Step **928a**: Yes) the API analyzer **460** appends the device-specific or service-specific corpus in step **930a**.

In step **932a**, the API analyzer **460** maps additional natural language expressions to the API functions and parameters identified in step **914**. The additional natural language expressions may be identified by parsing the device-specific or service-specific corpus. The additional natural language expressions may also be natural language expressions that were previously determined to be relevant to the same category of smart device **160** or service provider. Additionally, the additional natural language expressions may be identified based on messages sent by users via the universal interaction platform **400**. For example, the universal interaction platform **400** may store messages sent to other users, services or smart devices **160**, categorize each message as relevant to certain categories of services or smart devices **160**, and identify potentially-relevant natural language expressions from the messages that were identified as relevant to the category of services or smart devices **160**. (For the purposes of determining potentially-relevant natural language expressions, the messages are stored without personally identifiable information.)

In step **934a**, the API analyzer **460** prompts the user to validate the API mapping performed in step **932a**. If any of the mappings were invalid (Step **936a**: No), the API analyzer **460** appends the device-specific or service-specific corpus in step **930a** and re-runs the API mapping algorithm with the additional information in step **932a**. The API analyzer **460** also prompts the user to validate that the API mapping is complete in step **934a**. If the user wishes to map additional natural language expressions to API functions (Step **938a**: No), the process returns to step **926a**. Otherwise (step **938a**: Yes), the process is complete.

FIGS. **9C** and **9D** show a flowchart of a process **900b** for determining the protocols and formats to obtain information regarding a service provider that provides the information in an unstructured format or in an unknown structure, according to one or more disclosed embodiments. The process **900b** may be used, for example, when a service provider does not maintain an API. The process **900b** includes operations that are similar to the process **900a**, which are referred to using like numbers.

17

Websites that describe the services provided by a service provider website are identified in step 902b. The websites may include the service provider website, a third party review website describing the service provider, etc. In some instances, a user (for example, the service provider) may identify the service provider websites via a user interface. In other instances, the universal interaction platform 400 may identify the service provider websites, for example by crawling the internet and identifying service providers to add to the universal interaction platform 400.

A service category is determined (for example, by user selection or by the API analyzer 460 parsing the service provider websites) in step 904b. A category-specific corpus is selected in step 906b based on the service category determined in step 904b. The category-specific corpus is appended to form a service-specific corpus as described below.

The API analyzer 460 parses the content of the service provider websites to extract distinct objects that hold potentially meaningful information in step 942. (If a service provider website says, for example, “We are available from 9 am to 10 pm at 215-569-5500 with friendly service” the API analyzer 460 may determine that ‘9 am,’ ‘10 pm’ and ‘215-569-5500’ are potentially meaningful whereas “with friendly service” is not an object that includes potentially meaningful information.) The meaningful information may include any information relevant to the service provider or the services offered by the service provider. For example, the API analyzer 460 may parse a restaurant website and extract objects that include information regarding the service provider such as the name, address, telephone number, reviews, hours of operation, etc. as well as objects that include information regarding the services, such as the title, description, and price of each menu item. In the commuter train system example described above with reference to FIGS. 5A and 5B, the API analyzer 460 may parse the commuter train system website and extract objects that include the name and address of each station, the name of each train, and the departure times for each train, etc. The API analyzer 460 stores the objects, for example, in the storage device 122. Each time the API analyzer 460 determines that a distinct object on the service provider websites includes relevant information, the API Analyzer 460 may store the location of that object so that the API analyzer 460 can periodically re-parse the service provider websites and quickly and easily update the information stored in the storage device 122.

The API analyzer 460 removes duplicate objects in step 944. The service provider websites may list certain information (for example, an address or phone number) in more than one location. Additionally, some of the same information may be included in both a service provider website and a third-party review website. Accordingly, the API analyzer 460 eliminates the duplicate objects.

The API analyzer 460 determines a probably category for each object by comparing the objects to a database of known data types, structures, and/or keywords in step 946. In the example above, the API analyzer 460 may compare the object ‘215-569-5500’ to the database of known data types, structures, and/or keywords and determine based on the comparison to the database that the most probable category of that object is a phone number.

The API analyzer 460 may prompt the user to validate the categorization of each object in step 948. In the example above, the API analyzer 460 may prompt the user to confirm that ‘215-569-5500’ is a phone number. If the user indicates that any of the categorizations are incorrect (Step 950: No), the service-specific corpus is appended to include this addi-

18

tional information in step 952 and the API analyzer returns to step 946 and re-categorizes the objects.

Once the user indicates that all of the categorizations are correct (Step 950: Yes), the API analyzer 460 determines an optimal API structure in step 954 for users to query the dataset of information regarding the service provider. The optimal API structure is a map linking the objects extracted from the service provider websites with queries for returning that meaningful information. The queries and the objects may have a many-to many relationship. Using the example above, the map may include the example queries and the objects as shown in Table 4.

TABLE 4

Query	Object(s)
getPhoneNumber()	215-569-5500
getAddress()	One Logan Square 130 North 18th Street Philadelphia, PA 19103-6998
getBusinessInfo()	Blank Rome LLP One Logan Square 130 North 18th Street Philadelphia, PA 19103-6998 215-569-5500

Using the commuter train system example described above with reference to FIGS. 5A and 5B, the optimal API structure may include queries and parameters. For example, one query may be ‘getDepartureTimes(startingStation, direction, currentTime)’ where the query is a request for the departure times based on parameters that include the departure station (‘startingStation’), the direction of travel (‘direction’) and the current time (‘currentTime’). In another example, a query may be ‘getTransitTime(startingStation, endingStation, currentTime)’ where the query is a request for a travel time between a departure station and a destination (‘endingStation’) with an additional parameter of the current time used to identify the next available train to use when calculating the travel time.

The API analyzer 460 may determine the optimal API structure by comparing the dataset for the service provider to other API structures within the universal interaction platform 400 and selecting an API structure (for example, an API structure developed by a third party developer) that is used to output similar types of data. If none of the API structures within the universal interaction platform 400 are used to output similar types of data, the API analyzer 460 may simply store each object separately and create a separate query to return each of the objects. If the universal interaction platform 400 includes multiple APIs that are used to output similar types of data, the API analyzer 460 may select the API structure that is most commonly used to output similar types of data. The universal interaction platform 400 may also include an internal rating of some or all of the API structures and the API analyzer 460 may select the highest rated API structure from among the API structures that are used for similar types of data.

As described above with reference to FIG. 9C, the API analyzer 460 extracts information regarding a service provider—information that may be in an unstructured format or in an unknown structure—and organizes that information in a structured format similar to the API structures developed by third parties as described above with reference to FIGS. 9A and 9B. The remaining steps of the process 900b, which are shown in FIG. 9D, as similar to the process 900a, except that the process 900a maps natural language expressions to functions available via a third party API whereas the process

19

900*b* maps natural language expressions to queries identified by the API analyzer 460 in step 954.

In step 926*b*, the API analyzer 460 prompts the user to map the queries identified by the API analyzer 460 in step 954 with natural language expressions (i.e., queries). Using the examples in Table 4 above, the map may include the example mappings shown in Table 5.

TABLE 5

Query	Natural Language Expression
getPhoneNumber()	What is the phone number?
getAddress()	What is the address?

Using the commuter train system example described above, the map may include the example mappings shown in Table 6.

TABLE 6

Query	Natural Language Expression
getDepartureTimes(Palo Alto, North, currentTime)	When are the next northbound train from Palo Alto?
getTransitTime(Palo Alto, San Francisco, currentTime)	How long will it take to get from Palo Alto to San Francisco?

If the user maps API functions and parameters with natural language expressions (Step 928*b*: Yes) the API analyzer 460 appends the service-specific corpus in step 930*b*.

In step 932*b*, the API analyzer 460 maps additional natural language expressions to the queries identified by the API analyzer 460 in step 954. The additional natural language expressions may be identified by parsing the service-specific corpus. The additional natural language expressions may also be natural language expressions that were previously determined to be relevant to the same category of service provider. Additionally, the additional natural language expressions may be identified based on messages sent by users via the universal interaction platform 400. For example, the universal interaction platform 400 may store messages sent to other users, services or smart devices 160, categorize each message as relevant to certain categories of service providers, and identify potentially-relevant natural language expressions from the messages that were identified as relevant to the category of service providers. (For the purposes of determining potentially-relevant natural language expressions, the messages are stored without personally identifiable information.)

In step 934*b*, the API analyzer 460 prompts the user to validate the mappings performed in step 932*b*. If any of the mappings were invalid (Step 936*b*: No), the API analyzer 460 appends the service-specific corpus in step 930*b* and re-runs the API mapping algorithm with the additional information in step 932*b*. The API analyzer 460 also prompts the user to validate that the API mapping is complete in step 934*b*. If the user wishes to map additional natural language expressions to API functions (Step 938*b*: No), the process returns to step 926*b*. Otherwise (step 938*b*: Yes), the process is complete.

EXAMPLES

The following examples pertain to further embodiments. Example 1 is a computer-implemented method of interacting with a plurality of service providers and smart devices

20

comprising: receiving a message object from a client device, the message object including information indicative of a user intent for an intended recipient to perform a function in response to the message object, the intended recipient being one of the plurality of service providers and smart devices; determining the intended recipient based on the message object; determining a protocol and format for communicating with the intended recipient; formatting an instruction, in the determined format, for the intended recipient to perform the function; and outputting the instruction to the intended recipient using the determined protocol.

Example 2 includes the subject matter of example 1, wherein the protocol and format are determined based on an application program interface maintained by the intended recipient.

Example 3 includes the subject matter of example 1, wherein the information indicative of the user intent is input by a user using natural language and the method further comprises determining a user intent by parsing the natural language.

Example 4 includes the subject matter of example 3, wherein the user intent is further determined based on a location of the client device, a time the message object is received, a time the message object is output by the client device, or a previous message object output by the user.

Example 5 includes the subject matter of example 1, wherein the intended recipient is a service provider and the user intent is for the service provider to perform a service or output information regarding a service.

Example 6 includes the subject matter of example 1, wherein the intended recipient is a smart device and the user intent is to control the smart device or for the smart device to output information.

Example 7 includes the subject matter of example 1, wherein the message object is output by the client device via an inbox configured to communicate with individuals and the plurality of service providers and smart devices.

Example 8 includes the subject matter of example 7, wherein the intended recipient is determined based on a user selection via the inbox.

Example 9 is a universal interaction platform, comprising: a messaging service that receives a message object from a client device, the message object including information indicative of a user intent for an intended recipient to perform a function in response to the message object, the intended recipient being one of the plurality of service providers and smart devices; and determines the intended recipient based on the message object; and an internet of things service that: determines a protocol and format for communicating with the intended recipient; formats an instruction, in the determined format, for the intended recipient to perform the function; and outputs the instruction to the intended recipient using the determined protocol.

Example 10 includes the subject matter of example 9, wherein the protocol and format are determined based on an application program interface maintained by the intended recipient.

Example 11 includes the subject matter of example 9, wherein the information indicative of the user intent is input by a user using natural language and the universal interaction platform further comprises a natural language classifier that determines the user intent by parsing the natural language.

Example 12 includes the subject matter of example 11, wherein the user intent is further determined based on a location of the client device on a time the message object is

21

received, a time the message object is output by the client device, or a previous message object output by the user.

Example 13 includes the subject matter of example 9, wherein the intended recipient is a service provider and the user intent is for the service provider to perform a service or output information regarding a service.

Example 14 includes the subject matter of example 9, wherein the intended recipient is a smart device and the user intent is to control the smart device or for the smart device to output information.

Example 15 includes the subject matter of example 9, wherein the message object is output by the client device via an inbox configured to communicate with individuals and the plurality of service providers and smart devices.

Example 16 includes the subject matter of example 15, wherein the intended recipient is determined based on a user selection via the inbox.

Example 17 is a non-transitory computer readable storage medium (CRSM) comprising computer executable instructions stored thereon to cause one or more processing units to receive a message object from a client device, the message object including information indicative of a user intent for an intended recipient to perform a function in response to the message object, the intended recipient being one of the plurality of service providers and smart devices; determine the intended recipient based on the message object; determine a protocol and format for communicating with the intended recipient; format an instruction, in the determined format, for the intended recipient to perform the function; and output the instruction to the intended recipient using the determined protocol.

Example 18 includes the subject matter of example 17, wherein the protocol and format are determined based on an application program interface maintained by the intended recipient.

Example 19 includes the subject matter of example 17, wherein the information indicative of the user intent is input by a user using natural language and the instructions further cause the one or more processing units to determine a user intent by parsing the natural language.

Example 20 includes the subject matter of example 19, wherein the user intent is further determined based on a location of the client device, a time the message object is received, a time the message object is output by the client device, or a previous message object output by the user.

Example 21 includes the subject matter of example 17, wherein the intended recipient is a service provider and the user intent is for the service provider to perform a service or output information regarding a service.

Example 22 includes the subject matter of example 17, wherein the intended recipient is a smart device and the user intent is to control the smart device or for the smart device to output information.

Example 23 includes the subject matter of example 17, wherein the message object is output by the client device via an inbox configured to communicate with individuals and the plurality of service providers and smart devices.

Example 24 includes the subject matter of example 23, wherein the intended recipient is determined based on a user selection via the inbox.

In the foregoing description, for purposes of explanation, numerous specific details are set forth in order to provide a thorough understanding of the disclosed embodiments. It will be apparent, however, to one skilled in the art that the disclosed embodiments may be practiced without these specific details. In other instances, structure and devices are shown in block diagram form in order to avoid obscuring the

22

disclosed embodiments. References to numbers without subscripts or suffixes are understood to reference all instance of subscripts and suffixes corresponding to the referenced number. Moreover, the language used in this disclosure has been principally selected for readability and instructional purposes, and may not have been selected to delineate or circumscribe the inventive subject matter, resort to the claims being necessary to determine such inventive subject matter. Reference in the specification to “one embodiment” or to “an embodiment” means that a particular feature, structure, or characteristic described in connection with the embodiments is included in at least one disclosed embodiment, and multiple references to “one embodiment” or “an embodiment” should not be understood as necessarily all referring to the same embodiment.

It is also to be understood that the above description is intended to be illustrative, and not restrictive. For example, above-described embodiments may be used in combination with each other and illustrative process steps may be performed in an order different than shown. Many other embodiments will be apparent to those of skill in the art upon reviewing the above description. The scope of the invention therefore should be determined with reference to the appended claims, along with the full scope of equivalents to which such claims are entitled. In the appended claims, terms “including” and “in which” are used as plain-English equivalents of the respective terms “comprising” and “wherein.”

What is claimed is:

1. A computer-implemented method of interacting with a plurality of service providers and smart devices, the method comprising:

storing a protocol and a format for instructions to each of the plurality of service providers and smart devices, the protocols and formats being identified based on publicly available data or application program interfaces offered by the plurality of service providers and smart devices;

receiving a message object from a client device, the message object including information indicative of a user intent for an intended recipient to perform a function in response to the message object, the intended recipient being one of the plurality of service providers and smart devices;

determining the intended recipient based on the message object;

selecting the protocol and the format for communicating with the intended recipient from among the stored protocols and formats;

formatting an instruction, in the selected format, for the intended recipient to perform the function; and outputting the instruction to the intended recipient using the selected protocol.

2. The method of claim 1, wherein the information indicative of the user intent is input by a user using natural language, the method further comprising:

determining the user intent by parsing the natural language.

3. The method of claim 2, wherein the user intent is further determined based on a location of the client device, a time the message object is received, a time the message object is output by the client device, or a previous message object output by the user.

4. The method of claim 1, wherein the intended recipient is a service provider and the user intent is for the service provider to perform a service or output information regarding a service.

23

5. The method of claim 1, wherein the intended recipient is a smart device and the user intent is to control the smart device or for the smart device to output information.

6. The method of claim 1, wherein the message object is output by the client device via an inbox configured to communicate with individuals and the plurality of service providers and smart devices.

7. The method of claim 6, wherein the intended recipient is determined based on a user selection via the inbox.

8. A universal interaction platform, comprising:

non-transitory computer readable media that store a protocol and a format for instructions to each of a plurality of service providers and smart devices, the protocols and formats being identified based on publicly available data or application program interfaces offered by the plurality of service providers and smart devices;

a messaging service software module, stored on the non-transitory computer readable media and executed by a server, that:

receives a message object from a client device, the message object including information indicative of a user intent for an intended recipient to perform a function in response to the message object, the intended recipient being one of the plurality of service providers and smart devices; and determines the intended recipient based on the message object; and

an internet of things service software module, stored on the non-transitory computer readable media and executed by the server, that:

selects the protocol and the format for communicating with the intended recipient from among the stored protocols and formats;

formats an instruction, in the selected format, for the intended recipient to perform the function; and outputs the instruction to the intended recipient using the selected protocol.

9. The universal interaction platform of claim 8, wherein: the information indicative of the user intent is input by a user using natural language; and

the universal interaction platform further comprises a natural language classifier that determines the user intent by parsing the natural language.

10. The universal interaction platform of claim 9, wherein the user intent is further determined based on a location of the client device, a time the message object is received, a time the message object is output by the client device, or a previous message object output by the user.

11. The universal interaction platform of claim 8, wherein the intended recipient is a service provider and the user intent is for the service provider to perform a service or output information regarding a service.

12. The universal interaction platform of claim 8, wherein the intended recipient is a smart device and the user intent is to control the smart device or for the smart device to output information.

24

13. The universal interaction platform of claim 8, wherein the message object is output by the client device via an inbox configured to communicate with individuals and the plurality of service providers and smart devices.

14. The universal interaction platform of claim 13, wherein the intended recipient is determined based on a user selection via the inbox.

15. A non-transitory computer readable storage medium (CRSM) comprising computer executable instructions stored thereon to cause one or more processing units to:

store a protocol and a format for instructions to each of a plurality of service providers and smart devices, the protocols and formats being identified based on publicly available data or application program interfaces offered by the plurality of service providers and smart devices;

receive a message object from a client device, the message object including information indicative of a user intent for an intended recipient to perform a function in response to the message object, the intended recipient being one of the plurality of service providers and smart devices;

determine the intended recipient based on the message object;

select the protocol and the format for communicating with the intended recipient from among the stored protocols and formats;

format an instruction, in the selected format, for the intended recipient to perform the function; and

output the instruction to the intended recipient using the selected protocol.

16. The CRSM of claim 15, wherein the information indicative of the user intent is input by a user using natural language, the computer executable instructions further causing the one or more processing units to:

determine the user intent by parsing the natural language.

17. The CRSM of claim 16, wherein the user intent is further determined based on a location of the client device, a time the message object is received, a time the message object is output by the client device, or a previous message object output by the user.

18. The CRSM of claim 15, wherein the intended recipient is a service provider and the user intent is for the service provider to perform a service or output information regarding a service.

19. The CRSM of claim 15, wherein the intended recipient is a smart device and the user intent is to control the smart device or for the smart device to output information.

20. The CRSM of claim 15, wherein the message object is output by the client device via an inbox configured to communicate with individuals and the plurality of service providers and smart devices.

21. The CRSM of claim 20, wherein the intended recipient is determined based on a user selection via the inbox.

* * * * *